

**COMMUNICATIONS
ALLIANCE LTD**



DRAFT INDUSTRY GUIDELINE
DR G613.4:2016
LOCAL NUMBER PORTABILITY
IT TEST PLAN
PART 4 - CATEGORY C

**Draft Industry Guideline DR G613.4:2016 Local Number
Portability IT Test Plan Part 4 – Category C**

First published as ACIF G613.4:2004
Second edition as G613.4:2013

Communications Alliance Ltd (formerly Australian Communications Industry Forum Ltd) was formed in 2006 to provide a unified voice for the Australian communications industry and to lead it into the next generation of converging networks, technologies and services.

Disclaimers

- 1) Notwithstanding anything contained in this Industry Guideline:
 - a) Communications Alliance disclaims responsibility (including where Communications Alliance or any of its officers, employees, agents or contractors has been negligent) for any direct or indirect loss, damage, claim, or liability any person may incur as a result of any:
 - i) reliance on or compliance with this Industry Guideline;
 - ii) inaccuracy or inappropriateness of this Industry Code/Guideline; or
 - iii) inconsistency of this Industry Code/Guideline with any law; and
 - b) Communications Alliance disclaims responsibility (including where Communications Alliance or any of its officers, employees, agents or contractors has been negligent) for ensuring compliance by any person with this Industry Code/Guideline.
- 2) The above disclaimers will not apply to the extent they are inconsistent with any relevant legislation.

Copyright

© Communications Alliance Ltd 2016

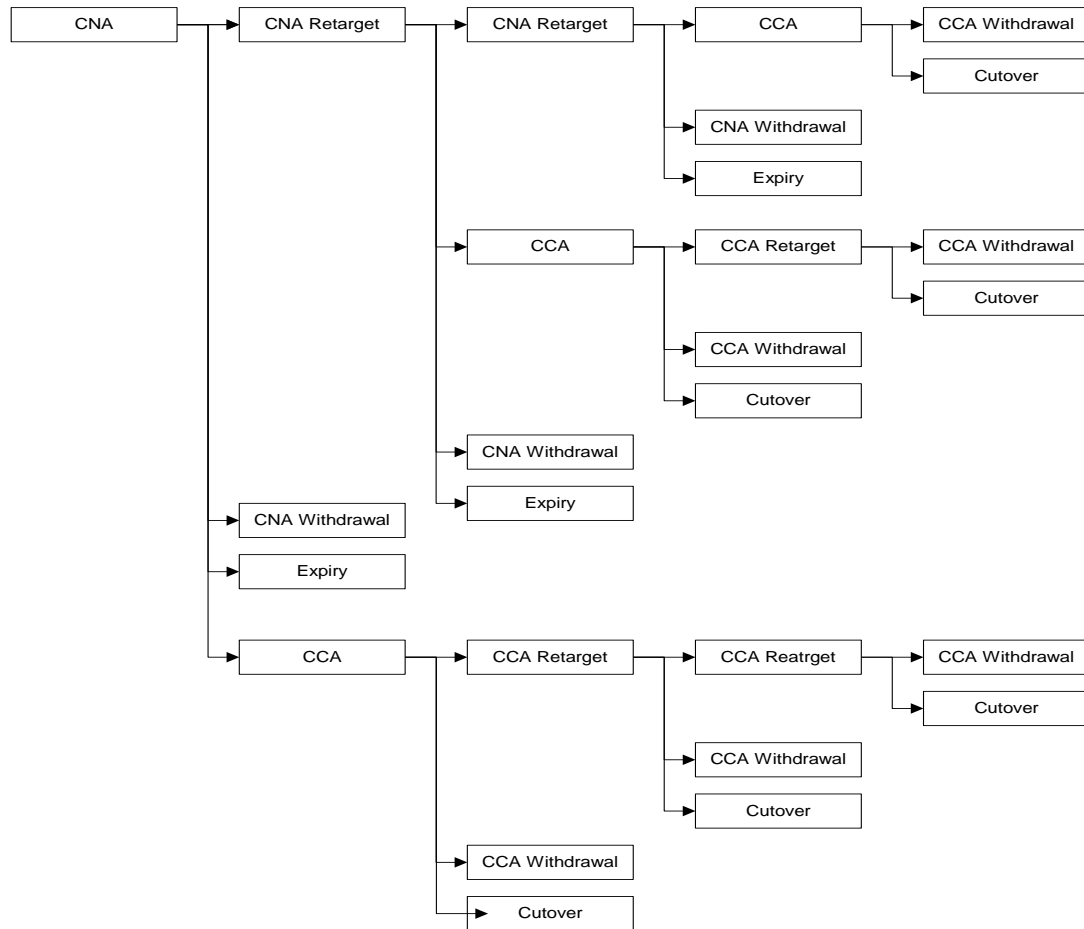
This document is copyright and must not be used except as permitted below or under the Copyright Act 1968. You may reproduce and publish this document in whole or in part for your or your organisation's own personal or internal compliance, educational or non-commercial purposes. You must not alter or amend this document in any way. You must not reproduce or publish this document for commercial gain without the prior written consent of Communications Alliance. Organisations wishing to reproduce or publish this document for commercial gain (i.e. for distribution to subscribers to an information service) should apply to Communications Alliance by contacting the Communications Alliance Commercial Manager at info@commsalliance.com.au.

TABLE OF CONTENTS

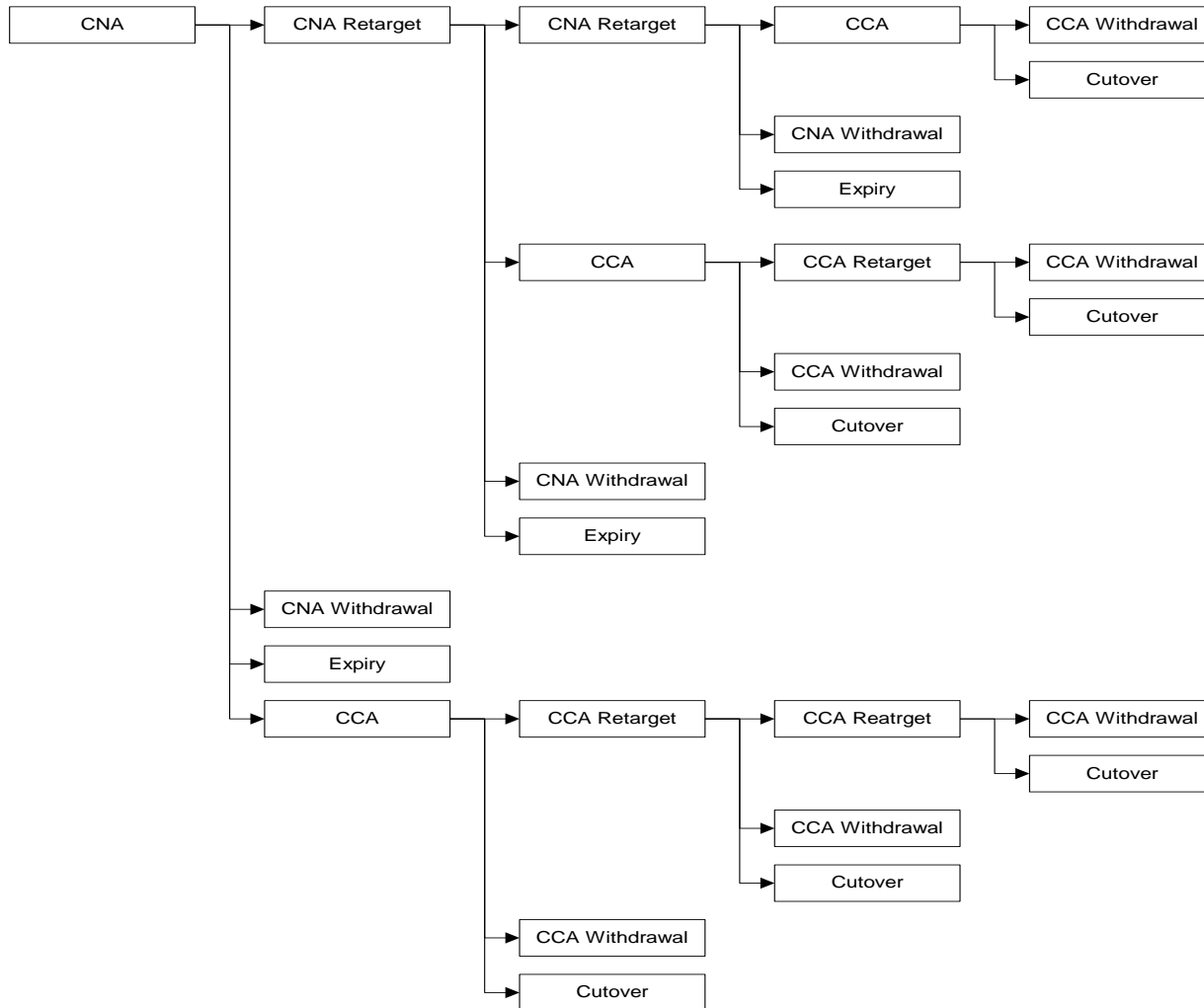
1	CATEGORY C - EVENT TREE DIAGRAMS	2
1.1	Category C - Donor as Losing Carrier	2
1.2	Category C - Donor as Gaining Carrier	3
1.3	Category C - Third Party	4
2	CATEGORY C - TEST SCENARIOS	5
2.1	Category C - Donor as Losing Carrier Scenario Description	5
2.2	Category C - Donor as Gaining Carrier Scenario Description	8
2.3	Category C - Third Party Porting Scenario Description	10
2.4	Giveback Scenario Description	12
3	TEST CASE DESCRIPTION FOR CATEGORY C PROCESS INTERCARRIER INTERFACE TESTING	13
3.1	Donor as Losing	13
3.2	Donor as Gaining	41
3.3	Third Party	69
3.4	Giveback	88
4	TEST RUN SCHEDULE MATRIX	90
4.1	Run Chart for Category C Process Inter-carrier Interface Testing	90
5	RESPONSE CODES	113
6	REFERENCES	119
	PARTICIPANTS	120

1 CATEGORY C - EVENT TREE DIAGRAMS

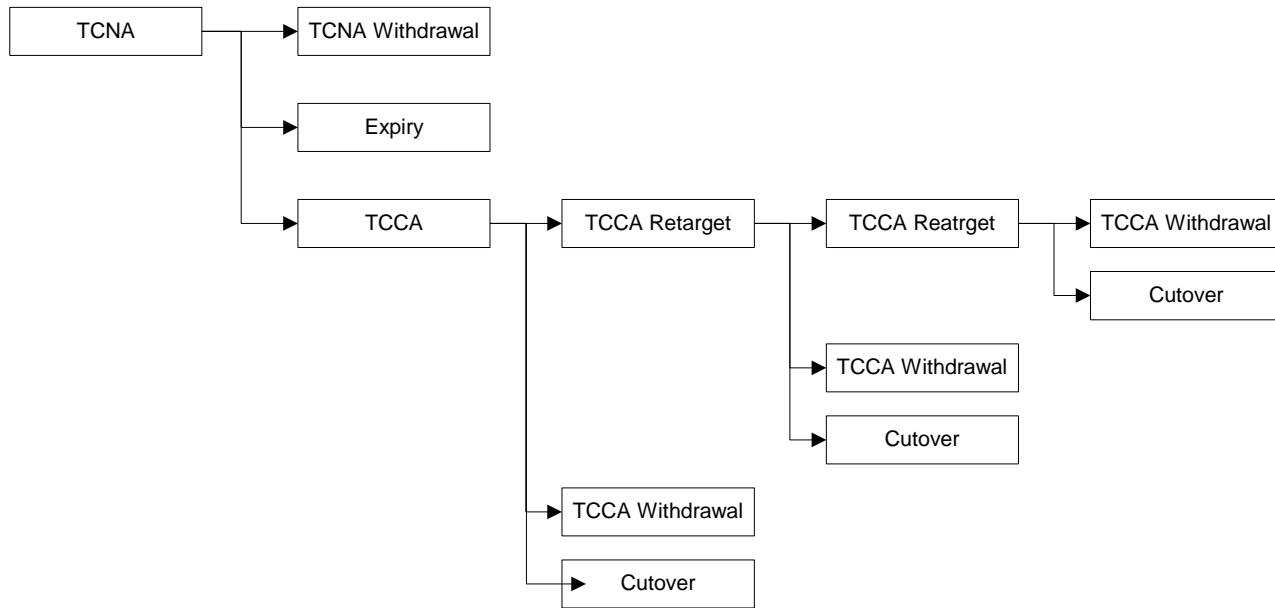
1.1 Category C - Donor as Losing Carrier



1.2 Category C - Donor as Gaining Carrier



1.3 Category C - Third Party



2 CATEGORY C - TEST SCENARIOS

2.1 Category C - Donor as Losing Carrier Scenario Description

Test Scenario No.	Test Scenario Type	Description	Recommended Minimum Test
CDL01	Successful Port	A successful Port from the Donor Carrier to the Gaining Carrier.	Yes
CDL02	Successful Port after CCA Rejection	A successful Port from the Donor Carrier to the Gaining Carrier after a CCA is rejected for Response Code 034 (Cutover Date and Commencement Time are not as agreed).	Yes
CDL03	Successful Port after a CNA Retarget accepted	A successful Port from the Donor Carrier to the Gaining Carrier after a CNA Retarget has been accepted.	Yes
CDL04	Successful Port after CCA rejection and CNA Retarget accepted	A successful Port from the Donor Carrier to the Gaining Carrier after a CCA is rejected for Response Code 034 (Cutover Date and Commencement Time are not as agreed) and then a CNA Retarget has been accepted.	Optional
CDL05	Successful Port after two CNA Retargets accepted	A successful Port from the Donor Carrier to the Gaining Carrier after two CNA Retargets has been accepted.	Yes
CDL06	Successful Port after Retarget rejection	A successful Port from the Donor Carrier to the Gaining Carrier after two CNA Retargets has been accepted and a third CNA Retarget rejected with Response Code 037 (Retarget limit exceeded).	Yes
CDL07	Successful Port after Withdrawal Rejection	A successful Port from the Donor Carrier to the Gaining Carrier after CNA Withdrawal is rejected with Response Code 055 (CCA Cutover Notification exists for the Batch Reference Number for same Gaining Carrier).	Yes

Test Scenario No.	Test Scenario Type	Description	Recommended Minimum Test
CDL08	Successful Port after two Retargets Accepted and CCA Withdrawal Rejection	A successful Port from the Donor Carrier to the Gaining Carrier after two Retargets (CNA) has been accepted and CCA Withdrawal is rejected with Response Code 032 (Insufficient notification timeframe). Withdrawal would be received on last day of Port window	Optional
CDL09	Successful CNA Withdrawal	A Port Request is terminated by a successful Withdrawal transaction	Yes
CDL10	Successful CNA Withdrawal after two Retargets Accepted	A Port Request is terminated by a successful Withdrawal transaction after two CNA Retargets have been accepted.	Yes
CDL11	Successful CCA Withdrawal	A Port Request is terminated by a successful CCA Withdrawal transaction	Yes
CDL12	Expiry	A Port Request is terminated by the generation of an Expiry Notification	Yes
CDL13	Expiry after one CNA Retarget accepted	A Port Request is terminated by the generation of an Expiry Notification after one CNA Retarget has been accepted.	Optional
CDL14	Expiry after two CNA Retargets accepted	A Port Request is terminated by the generation of an Expiry Notification after two CNA Retargets have been accepted.	Yes
CDL15	Expiry after Withdrawal rejection	A Port Request is terminated by the generation of an Expiry Notification after CNA Withdrawal has been rejected with Response Code 032 (Insufficient notification timeframe).	Yes
CDL16	Successful Port after one CCA Retarget	A successful Port from the Donor Carrier to the Gaining Carrier after a CCA Retarget has been accepted.	Yes
CDL17	Successful Port after two CCA Retargets	A successful Port from the Donor Carrier to the Gaining Carrier after two CCA Retargets has been accepted.	Yes

Test Scenario No.	Test Scenario Type	Description	Recommended Minimum Test
CDL18	Successful Port after one CNA and one CCA Retarget	A successful Port from the Donor Carrier to the Gaining Carrier after a CNA Retarget and a CCA Retarget has been accepted.	Yes
CDL19	Successful Port after Retarget rejection	A successful Port from the Donor Carrier to the Gaining Carrier after two Retargets (CNA and CCA) has been accepted and a third CCA Retarget rejected with Response Code 037 (Retarget limit exceeded).	Yes
CDL20	CCA Withdrawal after two Retargets	A Port Request is successfully terminated after a CNA Retarget and a CCA Retarget have been accepted.	Optional
CDL22	Rejected Port	A Port Request is rejected for Response Code 060 (Telephone Numbers in the batch are not inclusive of all Telephone Numbers associated to the Cat B product).	Yes
CDL23	Expiry after Emergency Return	A Port Request is terminated by the generation of an Expiry Notification after an Emergency Return.	Optional
CDL24	CCA after Emergency Return	A successful Port from the Donor Carrier to the Gaining Carrier after Emergency Return has occurred and new CCA accepted.	Optional
CDL25	CCA Retarget after Emergency Return	A successful Port from the Donor Carrier to the Gaining Carrier after Emergency Return has occurred and new CCA Retarget accepted.	Optional
CDL26	CCA Withdraw after Emergency Return	A Port Request is successfully terminated after an Emergency Return has occurred.	Optional

2.2 Category C - Donor as Gaining Carrier Scenario Description

Test Scenario No.	Test Scenario Type	Description	Recommended Minimum Test
CDG01	Successful Port	A successful Port from the Losing Carrier to the Donor Carrier.	Yes
CDG02	Successful Port after CCA Rejection	A successful Port from the Losing Carrier to the Donor Carrier after a CCA is rejected for Response Code 034 (Cutover Date and Commencement Time are not as agreed).	Optional
CDG03	Successful Port after a CNA Retarget accepted	A successful Port from the Losing Carrier to the Donor Carrier after a CNA Retarget has been accepted.	Yes
CDG04	Successful Port after CCA rejection and CNA Retarget accepted	A successful Port from the Losing Carrier to the Donor Carrier after a CCA is rejected for Response Code 034 (Cutover Date and Commencement Time are not as agreed) and then a CNA Retarget has been accepted.	Optional
CDG05	Successful Port after two CNA Retargets accepted	A successful Port from the Losing Carrier to the Donor Carrier after two CNA Retargets has been accepted.	Yes
CDG06	Successful Port after Retarget rejection	A successful Port from the Losing Carrier to the Donor Carrier after two CNA Retargets has been accepted and a third Retarget rejected with Response Code 037 (Retarget limit exceeded).	Optional
CDG07	Successful Port after Withdrawal Rejection	A successful Port from the Losing Carrier to the Donor Carrier after CNA Withdrawal is rejected with Response Code 055 (CCA Cutover Notification exist for the batch reference number for same Gaining Carrier).	Yes
CDG08	Successful Port after two Retargets Accepted and CCA Withdrawal Rejection	A successful Port from the Losing Carrier to the Donor Carrier after two Retargets (CNA and CCA) has been accepted and CCA Withdrawal is rejected with Response Code 032 (Insufficient notification timeframe). Withdrawal would be received on last day of Port window	Optional

Test Scenario No.	Test Scenario Type	Description	Recommended Minimum Test
CDG09	Successful CNA Withdrawal	A Port Request is terminated by a successful Withdrawal transaction.	Yes
CDG10	Successful CNA Withdrawal after two Retargets Accepted	A Port Request is terminated by a successful Withdrawal transaction after two CNA Retargets have been accepted.	Yes
CDG11	Successful CCA Withdrawal	A Port Request is terminated by a successful Withdrawal transaction.	Yes
CDG12	Expiry	A Port Request is terminated by the generation of an Expiry Notification.	Yes
CDG13	Expiry after one Retarget accepted	A Port Request is terminated by the generation of an Expiry Notification after one CNA Retarget has been accepted.	Optional
CDG14	Expiry after two CNA Retargets accepted	A Port Request is terminated by the generation of an Expiry Notification after two CNA Retargets have been accepted.	Yes
CDG15	Expiry after Withdrawal rejection	A Port Request is terminated by the generation of an Expiry Notification after CNA Withdrawal has been rejected with Response Code 032 (Insufficient notification timeframe).	Yes
CDG16	Successful Port after one CCA Retarget	A successful Port from the Losing Carrier to the Donor Carrier after a CCA Retarget has been accepted.	Yes
CDG17	Successful Port after two CCA Retargets	A successful Port from the Losing Carrier to the Donor Carrier after two CCA Retargets has been accepted.	Yes
CDG18	Successful Port after one CNA and one CCA Retarget	A successful Port from the Losing Carrier to the Donor Carrier after a CNA Retarget and a CCA Retarget has been accepted.	Yes

Test Scenario No.	Test Scenario Type	Description	Recommended Minimum Test
CDG19	Successful Port after Retarget rejection	A successful Port from the Losing Carrier to the Donor Carrier after two Retargets (CNA and CCA) has been accepted and a third CCA Retarget rejected with Response Code 037 (Retarget limit exceeded).	Yes
CDG20	CCA Withdrawal after two Retargets	A Port Request is successfully terminated after a CNA Retarget and a CCA Retarget have been accepted.	Optional
CDG22	Rejected Port	A Port Request is rejected for Response Code 060 (Telephone Numbers in the batch are not inclusive of all Telephone Numbers associated to the Cat B product).	Yes
CDG23	Expiry after Emergency Return	A Port Request is terminated by the generation of an Expiry Notification after an Emergency Return.	Optional
CDG24	CCA after Emergency Return	A successful Port from the Losing Carrier to the Donor Carrier after Emergency Return has occurred and new CCA accepted.	Optional
CDG25	CCA Retarget after Emergency Return	A successful Port from the Losing Carrier to the Donor Carrier after Emergency Return has occurred and new CCA Retarget accepted.	Optional
CDG26	CCA Withdraw after Emergency Return	A Port Request is successfully terminated after an Emergency Return has occurred.	Optional

2.3 Category C - Third Party Porting Scenario Description

Test Scenario No.	Test Scenario Type	Description	Recommended Minimum Test
CTP01	Successful Transfer	A successful Transfer by the Donor Carrier from the Losing Carrier to the Gaining Carrier.	Yes
CTP02	Successful Transfer after TCCA	A successful Transfer by the Donor Carrier from the Losing Carrier to the Gaining Carrier after a TCCA is	Yes

Test Scenario No.	Test Scenario Type	Description	Recommended Minimum Test
	Rejection	rejected for Response Code 034 (Cutover Date and Commencement Time are not as agreed).	
CTP03	Successful Transfer after TCCA Retarget	A successful Transfer by the Donor Carrier from the Losing Carrier to the Gaining Carrier after one Retarget (TCCA) has been accepted.	Yes
CTP04	Successful Transfer after two TCCA Retargets	A successful Transfer by the Donor Carrier from the Losing Carrier to the Gaining Carrier after two Retargets (TCCA) has been accepted.	Yes
CTP05	Successful Transfer after TCCA Retarget rejection	A successful Transfer by the Donor Carrier from the Losing Carrier to the Gaining Carrier after two Retargets (TCCA) have been accepted and a third TCCA Retarget rejected with Response Code 037 (Retarget limit exceeded).	Optional
CTP06	Successful Transfer after TCNA Withdrawal Rejection	A successful Transfer by the Donor Carrier from the Losing Carrier to the Gaining Carrier after TCNA Withdrawal is rejected with Response Code 055 (TCCA Cutover Notification exist for the batch reference number for same Gaining Carrier).	Yes
CTP07	Successful Transfer after two Retargets Accepted and TCCA Withdrawal Rejection	A successful Transfer by the Donor Carrier from the Losing Carrier to the Gaining Carrier after two Retargets (TCCA) have been accepted and TCCA Withdrawal is rejected with Response Code 032 (Insufficient notification timeframe). Withdrawal would be received on last day of Transfer window	Optional
CTP08	Successful TCNA Withdrawal	A Transfer request is terminated by a successful TCNA Withdrawal transaction.	Yes
CTP09	Successful TCCA Withdrawal	A Transfer request is terminated by a successful TCCA Withdrawal transaction.	Yes
CTP10	Donor Carrier Expiry	A Transfer request is terminated by the generation of a TCNA Expiry Notification.	Yes
CTP11	Donor Carrier Expiry after Withdrawal	A Transfer request is terminated by the generation of a TCNA Expiry Notification after TCNA Withdrawal has	Yes

Test Scenario No.	Test Scenario Type	Description	Recommended Minimum Test
	rejection	been rejected with Response Code 032 (Insufficient notification timeframe).	
CTP12	TCCA Withdrawal after two Retargets	A Transfer request is successfully terminated after two CCA Retargets have been accepted.	Optional
CTP13	Rejected Transfer	A Transfer request is rejected for Response Code 069 (All Telephone Numbers in the batch are not owned by the Donor).	Yes
CTP14	Expiry after Emergency Return	A Transfer request is terminated by the generation of an Expiry Notification after an Emergency Return	Optional
CTP15	TCCA after Emergency Return	A successful Transfer by the Donor Carrier from the Losing Carrier after Emergency Return has occurred and new TCCA accepted.	Optional
CTP16	TCCA Retarget after Emergency Return	A successful Transfer by the Donor Carrier from the Losing Carrier after Emergency Return has occurred and new TCCA Retarget accepted.	Optional
CTP17	TCCA Withdraw after Emergency Return	A Transfer request is successfully terminated after an Emergency Return has occurred.	Optional

2.4 Giveback Scenario Description

Test Scenario No.	Test Scenario Type	Description	Recommended Minimum Test
CGB01	Giveback Successful	A Giveback is successfully processed.	Yes
CGB02	Giveback Rejected	A Giveback is rejected for Response Code 038 (Giveback invalid)	Yes

3 TEST CASE DESCRIPTION FOR CATEGORY C PROCESS INTERCARRIER INTERFACE TESTING

3.1 Donor as Losing

Scenario No	CDL01
Pre- Requisite Scenario	
Test Scenario Type	Successful Port
Scenario Description	A successful Port from the Donor Carrier to the Gaining Carrier.
Detailed Test Description	A CNA is sent from the Gaining Carrier and receipt acknowledged by the Donor Carrier within 1 Business Day. The CNA confirmed by the Donor Carrier within 5 Business Days. A CCA is received and receipt acknowledged within 1 Business Day. The CCA confirmed by the Donor Carrier within 3 Business Days. Port is successfully completed on Cutover Date.
Test Outcome	Port successfully completed and Telephone Number appears on the Donor Carriers PLNR.

Day	Carrier	Transaction Type	Description	Code Value
0	G	CNA		n/a
1	D	CNA Receipt		n/a
3	D	CNA Confirmation		"000"
8	G	CCA		n/a
9	D	CCA Receipt		n/a
11	D	CCA Confirmation		"000"
15	D	Cutover complete	No physical transaction	n/a
16	D	PLNR update	Update PLNR with a new entry for the Telephone Number identifying the Gaining Carrier	"A"
17	D	PLNR update		"Space"

Scenario No	CDL02
Pre- Requisite Scenario	
Test Scenario Type	Successful Port after CCA Rejection
Scenario Description	A successful Port from the Donor Carrier to the Gaining Carrier after a CCA is rejected for Response Code 034
Detailed Test Description	A CNA is sent from the Gaining Carrier and receipt acknowledged by the Donor Carrier within 1 Business Day. The CNA confirmed by the Donor Carrier within 5 Business Days. A CCA is received and receipt acknowledged within 1 Business Day. The CCA is rejected and notification is sent with Response Code 034 (Cutover Date and Commencement Time are not as agreed). A second CCA is received and receipt is sent within 1 Business Day. The CCA confirmed by the Donor Carrier within 3 Business Days. Port is successfully completed on Cutover Date.
Test Outcome	Port successfully completed and Telephone Number appears on the Donor Carriers PLNR.

Day	Carrier	Transaction Type	Description	Code Value
0	G	CNA		n/a
1	D	CNA Receipt		n/a
3	D	CNA Confirmation		"000"
8	G	CCA		n/a
9	D	CCA Receipt		n/a
11	D	CCA Rejection	Cutover Date and Commencement Time are not as agreed	"034"
14	G	CCA		n/a
15	D	CCA Receipt		n/a
17	D	CCA Confirmation		"000"
21	D	Cutover complete	No physical transaction	n/a
22	D	PLNR update	Update PLNR with a new entry for the Telephone Number identifying the Gaining Carrier	"A"
23	D	PLNR update		"Space"

Scenario No	CDL03
Pre- Requisite Scenario	
Test Scenario Type	Successful Port after a CNA Retarget accepted
Scenario Description	A successful Port from the Donor Carrier to the Gaining Carrier after a CNA Retarget has been accepted.
Detailed Test Description	A CNA is sent from the Gaining Carrier and receipt acknowledged by the Donor Carrier within 1 Business Day. The CNA confirmed by the Donor Carrier within 5 Business Days. A CNA Retarget is received and confirmed within 1 Business Day. A CCA is received and receipt is sent within 1 Business Day. The CCA confirmed by the Donor Carrier within 3 Business Days. Port is successfully completed on Cutover Date.
Test Outcome	Port successfully completed and Telephone Number appears on the Donor Carriers PLNR.

Day	Carrier	Transaction Type	Description	Code Value
0	G	CNA		n/a
1	D	CNA Receipt		n/a
3	D	CNA Confirmation		"000"
8	G	CNA Retarget		n/a
9	D	CNA Retarget Confirmation		"000"
14	G	CCA		n/a
15	D	CCA Receipt		n/a
17	D	CCA Confirmation		"000"
21	D	Cutover complete	No physical transaction	n/a
22	D	PLNR update	Update PLNR with a new entry for the Telephone Number identifying the Gaining Carrier	"A"
23	D	PLNR update		"Space"

Scenario No	CDL04
Pre- Requisite Scenario	
Test Scenario Type	Successful Port after CCA rejection and CNA Retarget accepted
Scenario Description	A successful Port from the Donor Carrier to the Gaining Carrier after an CCA is rejected for Response Code 034 (Cutover Date and Commencement Time are not as agreed) and then a CNA Retarget has been accepted.
Detailed Test Description	A CNA is sent from the Gaining Carrier and receipt acknowledged by the Donor Carrier within 1 Business Day. The CNA confirmed by the Donor Carrier within 5 Business Days. A CNA Retarget is received and confirmed within 1 Business Day. A CCA is received and receipt acknowledged within 1 Business Day. The CCA is rejected and notification is sent with Response Code 034 (Cutover Date and Commencement Time are not as agreed). A second CCA is received and receipt is sent within 1 Business Day. The CCA confirmed by the Donor Carrier within 3 Business Days. Port is successfully completed on Cutover Date.
Test Outcome	Port successfully completed and Telephone Number appears on the Donor Carriers PLNR.

Day	Carrier	Transaction Type	Description	Code Value
0	G	CNA		n/a
1	D	CNA Receipt		n/a
3	D	CNA Confirmation		"000"
8	G	CNA Retarget		n/a
9	D	CNA Retarget Confirmation		"000"
14	G	CCA		n/a
15	D	CCA Receipt		n/a
17	D	CCA Rejection	Cutover Date and Commencement Time are not as agreed	"034"
21	G	CCA		n/a
22	D	CCA Receipt		n/a
23	D	CCA Confirmation		"000"
30	D	Cutover complete	No physical transaction	n/a
32	D	PLNR update	Update PLNR with a new entry for the Telephone	"A"

Day	Carrier	Transaction Type	Description	Code Value
			Number identifying the Gaining Carrier Would be updated on Day 31 except it is a Public Holiday.	
33	D	PLNR update		"Space"

Scenario No	CDL05
Pre- Requisite Scenario	
Test Scenario Type	Successful Port after two CNA Retargets accepted
Scenario Description	A successful Port from the Donor Carrier to the Gaining Carrier after two CNA Retargets have been accepted.
Detailed Test Description	A CNA is sent from the Gaining Carrier and receipt acknowledged by the Donor Carrier within 1 Business Day. The CNA confirmed by the Donor Carrier within 5 Business Days. A CNA Retarget is received and confirmed within 1 Business Day. A second CNA Retarget is received and confirmed within 1 Business Day. A CCA is received and receipt is sent within 1 Business Day. The CCA confirmed by the Donor Carrier within 3 Business Days. Port is successfully completed on Cutover Date.
Test Outcome	Port successfully completed and Telephone Number appears on the Donor Carriers PLNR.

Day	Carrier	Transaction Type	Description	Code Value
0	G	CNA		n/a
1	D	CNA Receipt		n/a
3	D	CNA Confirmation		"000"
8	G	CNA Retarget		n/a
9	D	CNA Retarget Confirmation		"000"
14	G	CNA Retarget		n/a
15	D	CNA Retarget Confirmation		"000"
21	G	CCA		n/a
22	D	CCA Receipt		n/a
23	D	CCA Confirmation		"000"

Day	Carrier	Transaction Type	Description	Code Value
30	D	Cutover complete	No physical transaction	n/a
32	D	PLNR update	Update PLNR with a new entry for the Telephone Number identifying the Gaining Carrier Would be updated on Day 31 except it is a Public Holiday.	"A"
33	D	PLNR update		"Space"

Scenario No	CDL06
Pre- Requisite Scenario	
Test Scenario Type	Successful Port after Retarget rejection
Scenario Description	A successful Port from the Donor carrier to the Gaining carrier after two CNA Retargets have been accepted and a third CNA Retarget rejected with Response Code 037 (Retarget limit exceeded).
Detailed Test Description	A CNA is sent from the Gaining Carrier and receipt acknowledged by the Donor Carrier within 1 Business Day. The CNA confirmed by the Donor Carrier within 5 Business Days. A CNA Retarget is received and confirmed within 1 Business Day. A second CNA Retarget is received and confirmed within 1 Business Day. A third CNA Retarget is received and rejected with Response Code 037 (Retarget limit exceeded). A CCA is received and receipt is sent within 1 Business Day. The CCA confirmed by the Donor Carrier within 3 Business Days. Port is successfully completed on Cutover Date.
Test Outcome	Port successfully completed and Telephone Number appears on the Donor Carriers PLNR.

Day	Carrier	Transaction Type	Description	Code Value
0	G	CNA		n/a
1	D	CNA Receipt		n/a
3	D	CNA Confirmation		"000"
8	G	CNA Retarget		n/a
9	D	CNA Retarget		"000"

		Confirmation		
14	G	CNA Retarget		n/a
15	D	CNA Retarget Confirmation		"000"
21	G	CNA Retarget		n/a
22	D	CNA Retarget Rejection	Retarget limit exceeded	"037"
30	G	CCA		n/a
32	D	CCA Receipt	Would be sent on Day 31 except it is a Public Holiday.	n/a
35	D	CCA Confirmation		"000"
38	D	Cutover complete	No physical transaction	n/a
39	D	PLNR update	Update PLNR with a new entry for the Telephone Number identifying the Gaining Carrier	"A"
40	D	PLNR update		"Space"

Scenario No	CDL07
Pre- Requisite Scenario	
Test Scenario Type	Successful Port after Withdrawal Rejection
Scenario Description	A successful Port from the Donor carrier to the Gaining carrier after CNA Withdrawal is rejected with Response Code 055 (CCA Cutover Notification exists for the batch reference number for same Gaining Carrier).
Detailed Test Description	A CNA is sent from the Gaining Carrier and receipt acknowledged by the Donor Carrier within 1 Business Day. The CNA confirmed by the Donor Carrier within 5 Business Days. A CCA is received and receipt acknowledged within 1 Business Day. A CNA Withdrawal is received and rejected with Response Code 055 (CCA Cutover Notification exists for the batch reference number for same Gaining Carrier). Port is successfully completed on Cutover Date.
Test Outcome	Port successfully completed and Telephone Number appears on the Donor Carriers PLNR.

Day	Carrier	Transaction Type	Description	Code Value
0	G	CNA		n/a
1	D	CNA Receipt		n/a
3	D	CNA Confirmation		"000"
8	G	CCA		n/a
9	D	CCA Receipt		n/a
11	D	CCA Confirmation		"000"
14	G	CNA Withdrawal		n/a
15	D	CNA Withdrawal Rejection	CCA Cutover Notification exists for the batch reference number for same Gaining Carrier	"055"
18	D	Cutover complete	No physical transaction	n/a
19	D	PLNR update	Update PLNR with a new entry for the Telephone Number identifying the Gaining Carrier	"A"
21	D	PLNR update	Would be updated on Day 20 except it is a Sunday.	"Space"

Scenario No	CDL08
Pre- Requisite Scenario	
Test Scenario Type	Successful Port after two Retargets Accepted and CCA Withdrawal Rejection
Scenario Description	A successful Port from the Donor carrier to the Gaining carrier after two Retargets (CNA and CCA) have been accepted and CCA Withdrawal is rejected with Response Code 032 (Insufficient notification timeframe). Withdrawal would be received on last day of Port window
Detailed Test Description	A CNA is sent from the Gaining Carrier and receipt acknowledged by the Donor Carrier within 1 Business Day. The CNA confirmed by the Donor Carrier within 5 Business Days. A CNA Retarget is received and confirmed within 1 Business Day. A CCA is received and receipt acknowledged within 1 Business Day. A CCA Retarget is received and confirmed within 3 Business Day. A CCA Withdrawal is received and rejected with Response Code 032 (Insufficient notification timeframe). Port is successfully completed on

	Cutover Date.
Test Outcome	Port successfully completed and Telephone Number appears on the Donor Carriers PLNR.

Day	Carrier	Transaction Type	Description	Code Value
0	G	CNA		n/a
1	D	CNA Receipt		n/a
3	D	CNA Confirmation		"000"
8	G	CNA Retarget		n/a
9	D	CNA Retarget Confirmation		"000"
14	G	CCA		n/a
15	D	CCA Receipt		n/a
17	D	CCA Confirmation		"000"
21	G	CCA Retarget		n/a
22	D	CCA Retarget Receipt		
23	D	CCA Retarget Confirmation		"000"
30	G	CCA Withdrawal		n/a
32	D	CCA Withdrawal Rejection	Insufficient notification timeframe Would be sent on Day 31 except it is a Public Holiday.	"032"
32	D	Cutover complete	No physical transaction	n/a
33	D	PLNR update	Update PLNR with a new entry for the Telephone Number identifying the Gaining Carrier	"A"
35	D	PLNR update	Would be updated on Day 34 except it is a Sunday.	"Space"

Scenario No	CDL09
Pre- Requisite Scenario	
Test Scenario Type	Successful CNA Withdrawal
Scenario Description	A Port Request is terminated by a successful Withdrawal transaction.
Detailed Test Description	A CNA is sent from the Gaining Carrier and receipt acknowledged by the Donor Carrier within 1 Business Day. The CNA confirmed by the Donor Carrier within 5 Business Days. The CNA Withdrawal is received and confirmed by the Donor Carrier within 1 Business Day.
Test Outcome	The Port is successfully cancelled and the Telephone Number does not appear on the Donor Carriers PLNR.

Day	Carrier	Transaction Type	Description	Code Value
0	G	CNA		n/a
1	D	CNA Receipt		n/a
3	D	CNA Confirmation		"000"
8	G	CNA Withdrawal Notification		n/a
9	D	CNA Withdrawal Confirmation		"000"
	D	PLNR not updated	The PLNR is not updated as the Port is successfully cancelled.	n/a

Scenario No	CDL10
Pre- Requisite Scenario	
Test Scenario Type	Successful CNA Withdrawal after two Retargets Accepted.
Scenario Description	A Port Request is terminated by a successful Withdrawal transaction after two CNA Retargets have been accepted.
Detailed Test Description	A CNA is sent from the Gaining Carrier and receipt acknowledged by the Donor Carrier within 1 Business Day. The CNA confirmed by the Donor Carrier within 5 Business Days. A CNA Retarget is received and confirmed within 1 Business Day. A second CNA Retarget is received and confirmed within 1 Business Day The CNA Withdrawal is received and confirmed by the Donor Carrier within 1 Business Day.
Test Outcome	The Port is successfully cancelled and the Telephone Number does not appear on the Donor Carriers PLNR.

Day	Carrier	Transaction Type	Description	Code Value
0	G	CNA		n/a
1	D	CNA Receipt		n/a
3	D	CNA Confirmation		"000"
8	G	CNA Retarget		n/a
9	D	CNA Retarget Confirmation		"000"
14	G	CNA Retarget		n/a
15	D	CNA Retarget Confirmation		"000"
21	G	CNA Withdrawal Notification		n/a
22	D	CNA Withdrawal Confirmation		"000"
	D	PLNR not updated	The PLNR is not updated as the Port is successfully cancelled.	n/a

Scenario No	CDL11
Pre- Requisite Scenario	
Test Scenario Type	Successful CCA Withdrawal.
Scenario Description	A Port Request is terminated by a successful CCA Withdrawal transaction.
Detailed Test Description	A CNA is sent from the Gaining Carrier and receipt acknowledged by the Donor Carrier within 1 Business Day. The CNA confirmed by the Donor Carrier within 5 Business Days. A CCA is received and receipt acknowledged within 1 Business Day. A CCA Withdrawal is received and confirmed within 1 Business Day.
Test Outcome	The Port is successfully cancelled and the Telephone Number does not appear on the Donor Carriers PLNR.

Day	Carrier	Transaction Type	Description	Code Value
0	G	CNA		n/a
1	D	CNA Receipt		n/a
3	D	CNA Confirmation		"000"
8	G	CCA		n/a
9	D	CCA Receipt		n/a
11	D	CCA Confirmation		"000"
14	G	CCA Withdrawal		n/a
15	D	CCA Withdrawal Confirmation		"000"
	D	PLNR not updated	The PLNR is not updated as the Port is successfully cancelled.	n/a

Scenario No	CDL12
Pre- Requisite Scenario	
Test Scenario Type	Expiry
Scenario Description	A Port Request is terminated by the generation of an Expiry Notification.
Detailed Test Description	A CNA is sent from the Gaining Carrier and receipt acknowledged by the Donor Carrier within 1 Business Day. The CNA confirmed by the Donor Carrier within 5 Business Days. No CCA Cutover Notification is received within 60 calendar days. The Donor Carrier cancels the CNA and sends a CNA Expiry Notification the Business Day following the expiry date.
Test Outcome	The Port Expires and the Telephone Number does not appear on the Donor Carriers PLNR.

Day	Carrier	Transaction Type	Description	Code Value
0	G	CNA		n/a
1	D	CNA Receipt		n/a
2	D	CNA Confirmation		"000"
60	D	CNA Expiry Notification		n/a
	D	PLNR not updated	The PLNR is not updated as the Port Expires.	n/a

Scenario No	CDL13
Pre- Requisite Scenario	
Test Scenario Type	Expiry after one CNA Retarget accepted.
Scenario Description	A Port Request is terminated by the generation of an Expiry Notification after one CNA Retarget has been accepted.
Detailed Test Description	A CNA is sent from the Gaining Carrier and receipt acknowledged by the Donor Carrier within 1 Business Day. The CNA confirmed by the Donor Carrier within 5 Business Days. A CNA Retarget is received and confirmed within 1 Business Day. No CCA Cutover Notification is received within 60 calendar days. The Donor Carrier cancels the CNA and sends a CNA Expiry Notification the Business Day following the expiry date.
Test Outcome	The Port Expires and the Telephone Number does not appear on the Donor Carriers PLNR.

Day	Carrier	Transaction Type	Description	Code Value
0	G	CNA		n/a
1	D	CNA Receipt		n/a
3	D	CNA Confirmation		"000"
8	G	CNA Retarget		n/a
9	D	CNA Retarget Confirmation		"000"
70	D	CNA Expiry Notification	Would be sent on Day 68 except it is Saturday.	n/a
	D	PLNR not updated	The PLNR is not updated as the Port Expires.	n/a

Scenario No	CDL14
Pre- Requisite Scenario	
Test Scenario Type	Expiry after two CNA Retargets accepted
Scenario Description	A Port Request is terminated by the generation of an Expiry Notification after two CNA Retargets have been accepted.
Detailed Test Description	A CNA is sent from the Gaining Carrier and receipt acknowledged by the Donor Carrier within 1 Business Day. The CNA confirmed by the Donor Carrier within 5 Business Days. A CNA Retarget is received and confirmed within 1 Business Day. A second CNA Retarget is received and confirmed within 1 Business Day. No CCA Cutover Notification is received within 60 calendar days. The Donor Carrier cancels the CNA and sends a CNA Expiry Notification the Business Day following the expiry date.
Test Outcome	The Port Expires and the Telephone Number does not appear on the Donor Carriers PLNR.

Day	Carrier	Transaction Type	Description	Code Value
0	G	CNA		n/a
1	D	CNA Receipt		n/a
3	D	CNA Confirmation		"000"
8	G	CNA Retarget		n/a
9	D	CNA Retarget Confirmation		"000"
14	G	CNA Retarget		n/a
15	D	CNA Retarget Confirmation		"000"
74	D	CNA Expiry Notification		n/a
	D	PLNR not updated	The PLNR is not updated as the Port Expires.	n/a

Scenario No	CDL15
Pre- Requisite Scenario	
Test Scenario Type	Expiry after Withdrawal rejection.
Scenario Description	A Port Request is terminated by the generation of an Expiry Notification after CNA Withdrawal has been rejected with Response Code 032 (Insufficient notification timeframe).
Detailed Test Description	A CNA is sent from the Gaining Carrier and receipt acknowledged by the Donor Carrier within 1 Business Day. The CNA confirmed by the Donor Carrier within 5 Business Days. . A CNA Withdrawal is received and rejected within 1 Business Day with Response Code 032 (Insufficient notification timeframe). No CCA Cutover Notification is received within 60 calendar days. The Donor Carrier cancels the CNA and sends a CNA Expiry Notification the Business Day following the expiry date.
Test Outcome	The Port Expires and the Telephone Number does not appear on the Donor Carriers PLNR.

Day	Carrier	Transaction Type	Description	Code Value
0	G	CNA		n/a
1	D	CNA Receipt		n/a
3	D	CNA Confirmation		"000"
59	G	CNA Withdrawal		n/a
60	D	CNA Expiry Notification		n/a
60	D	CNA Withdrawal Rejection	Insufficient notification timeframe.	"032"
	D	PLNR not updated	The PLNR is not updated as the Port Expires.	n/a

Scenario No	CDL16
Pre- Requisite Scenario	
Test Scenario Type	Successful Port after a CCA Retarget accepted.
Scenario Description	A successful Port from the Donor Carrier to the Gaining Carrier after a CCA Retarget has been accepted.
Detailed Test Description	A CNA is sent from the Gaining Carrier and receipt acknowledged by the Donor Carrier within 1 Business Day. The CNA confirmed by the Donor Carrier within 5 Business Days. A CCA is received and receipt is sent within 1 Business Day. The CCA confirmed by the Donor Carrier within 3 Business Days. A CCA Retarget is received, receipt acknowledged within 1 Business Day and confirmed within 3 Business Days. Port is successfully completed on Cutover Date.
Test Outcome	Port successfully completed and Telephone Number appears on the Donor Carriers PLNR.

Day	Carrier	Transaction Type	Description	Code Value
0	G	CNA		n/a
1	D	CNA Receipt		n/a
3	D	CNA Confirmation		"000"
8	G	CCA		n/a
9	D	CCA Receipt		n/a
11	D	CCA Confirmation		"000"
14	G	CCA Retarget		n/a
15	D	CCA Retarget Receipt		n/a
17	D	CCA Retarget Confirmation		"000"
21	D	Cutover complete	No physical transaction.	n/a
22	D	PLNR update	Update PLNR with a new entry for the Telephone Number identifying the Gaining Carrier.	"A"
23	D	PLNR update		"Space"

Scenario No	CDL17
Pre- Requisite Scenario	
Test Scenario Type	Successful Port after two CCA Retargets.
Scenario Description	A successful Port from the Donor Carrier to the Gaining Carrier after two CCA Retargets has been accepted.
Detailed Test Description	A CNA is sent from the Gaining Carrier and receipt acknowledged by the Donor Carrier within 1 Business Day. The CNA confirmed by the Donor Carrier within 5 Business Days. A CCA is received and receipt is sent within 1 Business Day. The CCA confirmed by the Donor Carrier within 3 Business Days. A CCA Retarget is received, receipt acknowledged within 1 Business Day and confirmed within 3 Business Days. A second CCA Retarget is received, receipt acknowledged within 1 Business Day and confirmed within 3 Business Days. Port is successfully completed on Cutover Date.
Test Outcome	Port successfully completed and Telephone Number appears on the Donor Carriers PLNR.

Day	Carrier	Transaction Type	Description	Code Value
0	G	CNA		n/a
1	D	CNA Receipt		n/a
3	D	CNA Confirmation		"000"
8	G	CCA		n/a
9	D	CCA Receipt		n/a
11	D	CCA Confirmation		"000"
14	G	CCA Retarget		n/a
15	D	CCA Retarget Receipt		n/a
17	D	CCA Retarget Confirmation		"000"
21	G	CCA Retarget		n/a
22	D	CCA Retarget Receipt		n/a
23	D	CCA Retarget Confirmation		"000"
30	D	Cutover complete	No physical transaction.	n/a
32	D	PLNR update	Update PLNR with a new entry for the Telephone Number identifying the	"A"

Day	Carrier	Transaction Type	Description	Code Value
			Gaining Carrier. Would be updated on Day 31 except it is a Public Holiday.	
33	D	PLNR update		"Space"

Scenario No	CDL18
Pre- Requisite Scenario	
Test Scenario Type	Successful Port after one CNA and one CCA Retarget.
Scenario Description	A successful Port from the Donor Carrier to the Gaining Carrier after a CNA Retarget and a CCA Retarget have been accepted.
Detailed Test Description	A CNA is sent from the Gaining Carrier and receipt acknowledged by the Donor Carrier within 1 Business Day. The CNA confirmed by the Donor Carrier within 5 Business Days. A CNA Retarget is received and confirmed within 1 Business Day. A CCA is received and receipt is sent within 1 Business Day. The CCA confirmed by the Donor Carrier within 3 Business Days. A CCA Retarget is received, receipt acknowledged within 1 Business Day and confirmed within 3 Business Days. Port is successfully completed on Cutover Date.
Test Outcome	Port successfully completed and Telephone Number appears on the Donor Carriers PLNR.

Day	Carrier	Transaction Type	Description	Code Value
0	G	CNA		n/a
1	D	CNA Receipt		n/a
3	D	CNA Confirmation		"000"
8	G	CNA Retarget		n/a
9	D	CNA Retarget Confirmation		"000"
14	G	CCA		n/a
15	D	CCA Receipt		n/a
17	D	CCA Confirmation		"000"
21	G	CCA Retarget		n/a

22	D	CCA Retarget Receipt		n/a
23	D	CCA Retarget Confirmation		"000"
30	D	Cutover complete	No physical transaction	n/a
32	D	PLNR update	Update PLNR with a new entry for the Telephone Number identifying the Gaining Carrier. Would be updated on Day 31 except it is a Public Holiday.	"A"
33	D	PLNR update		"Space"

Scenario No	CDL19
Pre- Requisite Scenario	
Test Scenario Type	Successful Port after Retarget rejection.
Scenario Description	A successful Port from the Donor carrier to the Gaining carrier after two Retargets (CNA and CCA) have been accepted and a third CCA Retarget rejected with Response Code 037 (Retarget limit exceeded).
Detailed Test Description	A CNA is sent from the Gaining Carrier and receipt acknowledged by the Donor Carrier within 1 Business Day. The CNA confirmed by the Donor Carrier within 5 Business Days. A CNA Retarget is received and confirmed within 1 Business Day. A CCA is received and receipt is sent within 1 Business Day. The CCA confirmed by the Donor Carrier within 3 Business Days. A CCA Retarget is received, receipt acknowledged within 1 Business Day and confirmed within 3 Business Days. A second CCA Retarget is received and rejected with Response Code 037 (Retarget limit exceeded).Port is successfully completed on Cutover Date.
Test Outcome	Port successfully completed and Telephone Number appears on the Donor Carriers PLNR.

Day	Carrier	Transaction Type	Description	Code Value
0	G	CNA		n/a
1	D	CNA Receipt		n/a
3	D	CNA Confirmation		"000"
8	G	CNA Retarget		n/a
9	D	CNA Retarget		"000"

Day	Carrier	Transaction Type	Description	Code Value
		Confirmation		
14	G	CCA		n/a
15	D	CCA Receipt		n/a
17	D	CCA Confirmation		"000"
21	G	CCA Retarget		n/a
22	D	CCA Retarget Receipt		n/a
23	D	CCA Retarget Confirmation		"000"
30	G	CCA Retarget		n/a
32	D	CCA Retarget Receipt	Would be sent on Day 31 except it is a Public Holiday.	n/a
35	D	CCA Retarget Rejection	Retarget limit exceeded.	"037"
38	D	Cutover complete	No physical transaction.	n/a
39	D	PLNR update	Update PLNR with a new entry for the Telephone Number identifying the Gaining Carrier.	"A"
40	D	PLNR update		"Space"

Scenario No	CDL20
Pre- Requisite Scenario	
Test Scenario Type	CCA Withdrawal after two Retargets.
Scenario Description	A Port Request is successfully terminated after a CNA Retarget and a CCA Retarget have been accepted.
Detailed Test Description	A CNA is sent from the Gaining Carrier and receipt acknowledged by the Donor Carrier within 1 Business Day. The CNA confirmed by the Donor Carrier within 5 Business Days. A CNA Retarget is received and confirmed within 1 Business Day. A CCA is received and receipt is sent within 1 Business Day. The CCA confirmed by the Donor Carrier within 3 Business Days. A CCA Retarget is received, receipt acknowledged within 1 Business Day and confirmed within 3 Business Days. A CCA Withdrawal is received and accepted.
Test Outcome	The Port is successfully cancelled and the Telephone Number does not appear on the Donor Carriers PLNR.

Day	Carrier	Transaction Type	Description	Code Value
0	G	CNA		n/a
1	D	CNA Receipt		n/a
3	D	CNA Confirmation		"000"
8	G	CNA Retarget		n/a
9	D	CNA Retarget Confirmation		"000"
14	G	CCA		n/a
15	D	CCA Receipt		n/a
17	D	CCA Confirmation		"000"
21	G	CCA Retarget		n/a
22	D	CCA Retarget Receipt		n/a
23	D	CCA Retarget Confirmation		"000"
30	G	CCA Withdrawal		n/a
32	D	CCA Withdrawal Confirmation	Would be sent on Day 31 except it is a Public Holiday.	"000"
	D	PLNR not updated	The PLNR is not updated as the Port is successfully cancelled.	n/a

Scenario No	CDL22
Pre- Requisite Scenario	
Test Scenario Type	Rejected Port
Scenario Description	A Port Request is rejected for Response Code 060 (Telephone Numbers in the batch are not inclusive of all Telephone Numbers associated to the Cat C product).
Detailed Test Description	A CNA is sent from the Gaining Carrier and receipt acknowledged by the Donor Carrier within 1 Business Day. The CNA is rejected by the Donor Carrier within 5 Business Days rejected for Response Code 060 (Telephone Numbers in the batch are not inclusive of all Telephone Numbers associated to the Cat C product).
Test Outcome	The Port is rejected and the Telephone Number does not appear on the Donor Carriers PLNR.

Day	Carrier	Transaction Type	Description	Code Value
0	G	CNA		n/a
1	D	CNA Receipt		n/a
3	D	CNA Rejection	Telephone Numbers in the batch are not inclusive of all Telephone Numbers associated to the Cat C product.	"060"
	D	PLNR not updated	The PLNR is not updated as the Port is rejected.	n/a

Scenario No	CDL23
Pre- Requisite Scenario	
Test Scenario Type	Expiry after Emergency Return.
Scenario Description	A Port Request is terminated by the generation of an Expiry Notification after an Emergency Return.
Detailed Test Description	A CNA is sent from the Gaining Carrier and receipt acknowledged by the Donor Carrier within 1 Business Day. The CNA confirmed by the Donor Carrier within 5 Business Days. A CCA is received and receipt acknowledged within 1 Business Day. The CCA confirmed by the Donor Carrier within 3 Business Days. Port is successfully completed on Cutover Date. An Emergency Return is called and the Port is allowed to expire.
Test Outcome	The Port Expires and the Telephone Number does not appear on the Donor Carriers PLNR.

Day	Carrier	Transaction Type	Description	Code Value
0	G	CNA		n/a
1	D	CNA Receipt		n/a
3	D	CNA Confirmation		"000"
8	G	CCA		n/a
9	D	CCA Receipt		n/a
11	D	CCA Confirmation		"000"
15	D	Cutover complete	No physical transaction	n/a
	G	Emergency Return	The Emergency Return is actioned within the Emergency Return period. This is a manual action.	n/a
60	D	CNA Expiry Notification		n/a
	D	PLNR not updated	The PLNR is not updated as the Port Expires.	n/a

Scenario No	CDL24
Pre- Requisite Scenario	
Test Scenario Type	CCA after Emergency Return
Scenario Description	A successful Port from the Donor Carrier to the Gaining Carrier after Emergency Return has occurred and new CCA accepted.
Detailed Test Description	A CNA is sent from the Gaining Carrier and receipt acknowledged by the Donor Carrier within 1 Business Day. The CNA confirmed by the Donor Carrier within 5 Business Days. A CCA is received and receipt acknowledged within 1 Business Day. The CCA confirmed by the Donor Carrier within 3 Business Days. Port is successfully completed on Cutover Date. An Emergency Return is called. A CCA is received and receipt is sent within 1 Business Day. The CCA confirmed by the Donor Carrier within 3 Business Days. Port is successfully completed on Cutover Date.
Test Outcome	Port successfully completed and Telephone Number appears on the Donor Carrier's PLNR.

Day	Carrier	Transaction Type	Description	Code Value
0	G	CNA		n/a
1	D	CNA Receipt		n/a
3	D	CNA Confirmation		"000"
8	G	CCA		n/a
9	D	CCA Receipt		n/a
11	D	CCA Confirmation		"000"
15	D	Cutover complete	No physical transaction	n/a
	G	Emergency Return	The Emergency Return is actioned within the Emergency Return period. This is a manual action	n/a
21	G	CCA		n/a
22	D	CCA Receipt		n/a
23	D	CCA Confirmation		"000"
30	D	Cutover complete	No physical transaction	n/a
32	D	PLNR update	Update PLNR with a new entry for the Telephone Number identifying the	"A"

Day	Carrier	Transaction Type	Description	Code Value
			Gaining Carrier. Would be updated on Day 31 except it is a Public Holiday.	
33	D	PLNR update		"Space"

Scenario No	CDL25
Pre- Requisite Scenario	
Test Scenario Type	CCA Retarget after Emergency Return
Scenario Description	A successful Port from the Donor Carrier to the Gaining Carrier after Emergency Return has occurred and new CCA Retarget accepted.
Detailed Test Description	A CNA is sent from the Gaining Carrier and receipt acknowledged by the Donor Carrier within 1 Business Day. The CNA confirmed by the Donor Carrier within 5 Business Days. A CCA is received and receipt acknowledged within 1 Business Day. The CCA confirmed by the Donor Carrier within 3 Business Days. Port is successfully completed on Cutover Date. An Emergency Return is called. A CCA Retarget is received and receipt is sent within 1 Business Day. The CCA Retarget confirmed by the Donor Carrier within 3 Business Days. Port is successfully completed on Cutover Date.
Test Outcome	Port successfully completed and Telephone Number appears on the Donor Carrier's PLNR.

Day	Carrier	Transaction Type	Description	Code Value
0	G	CNA		n/a
1	D	CNA Receipt		n/a
3	D	CNA Confirmation		"000"
8	G	CCA		n/a
9	D	CCA Receipt		n/a
11	D	CCA Confirmation		"000"
15	D	Cutover complete	No physical transaction	n/a
	G	Emergency Return	The Emergency Return is actioned within the Emergency Return period.	n/a

Day	Carrier	Transaction Type	Description	Code Value
			This is a manual action.	
21	G	CCA Retarget		n/a
22	D	CCA Retarget Receipt		n/a
23	D	CCA Retarget Confirmation		"000"
30	D	Cutover complete	No physical transaction.	n/a
32	D	PLNR update	Update PLNR with a new entry for the Telephone Number identifying the Gaining Carrier. Would be updated on Day 31 except it is a Public Holiday.	"A"
33	D	PLNR update		"Space"

Scenario No	CDL26
Pre- Requisite Scenario	
Test Scenario Type	CCA Withdraw after Emergency Return.
Scenario Description	A Port Request is successfully terminated after an Emergency Return has occurred.
Detailed Test Description	A CNA is sent from the Gaining Carrier and receipt acknowledged by the Donor Carrier within 1 Business Day. The CNA confirmed by the Donor Carrier within 5 Business Days. A CCA is received and receipt acknowledged within 1 Business Day. The CCA confirmed by the Donor Carrier within 3 Business Days. Port is successfully completed on Cutover Date. An Emergency Return is called. A CCA Withdrawal is received and confirmation is sent within 1 Business Day.
Test Outcome	The Port is successfully cancelled and the Telephone Number does not appear on the Donor Carrier's PLNR.

Day	Carrier	Transaction Type	Description	Code Value
0	G	CNA		n/a
1	D	CNA Receipt		n/a
3	D	CNA Confirmation		"000"
8	G	CCA		n/a
9	D	CCA Receipt		n/a

11	D	CCA Confirmation		"000"
15	D	Cutover complete	No physical transaction.	n/a
	G	Emergency Return	The Emergency Return is actioned within the Emergency Return period. This is a manual action.	n/a
21	G	CCA Withdrawal		n/a
22	D	CCA Withdrawal Confirmation		"000"
	D	PLNR not updated	The PLNR is not updated as the Port is successfully cancelled.	n/a

3.2 Donor as Gaining

Scenario No	CDG01
Pre- Requisite Scenario	CDL01
Test Scenario Type	Successful Port
Scenario Description	A successful Port from the Losing Carrier to the Donor Carrier.
Detailed Test Description	A CNA is sent from the Donor Carrier and receipt acknowledged by the Losing Carrier within 1 Business Day. The CNA confirmed by the Losing Carrier within 5 Business Days. A CCA is received and receipt acknowledged within 1 Business Day. The CCA confirmed by the Losing Carrier within 3 Business Days. Port is successfully completed on Cutover Date.
Test Outcome	Port successfully completed and Telephone Number no longer on PLNR.

Day	Carrier	Transaction Type	Description	Code Value
0	D	CNA		n/a
0	D	PLNR update		"D"
1	L	CNA Receipt		n/a
1	D	PLNR update		"E"
3	L	CNA Confirmation		"000"
8	D	CCA		n/a
9	L	CCA Receipt		n/a
11	L	CCA Confirmation		"000"
15	L	Cutover complete	No physical transaction	n/a
16	D	PLNR update		"C"
17	D	PLNR update	PLNR entry removed	n/a

Scenario No	CDG02
Pre- Requisite Scenario	
Test Scenario Type	Successful Port after CCA Rejection.
Scenario Description	A successful Port from the Losing Carrier to the Donor Carrier after a CCA is rejected for Response Code 034 (Cutover Date and Commencement Time are not as agreed).
Detailed Test Description	A CNA is sent from the Donor Carrier and receipt acknowledged by the Losing Carrier within 1 Business Day. The CNA confirmed by the Losing Carrier within 5 Business Days. A CCA is received and receipt acknowledged within 1 Business Day. The CCA is rejected and notification is sent with Response Code 034 (Cutover Date and Commencement Time are not as agreed). A second CCA is received and receipt is sent within 1 Business Day. The CCA confirmed by the Losing Carrier within 3 Business Days. Port is successfully completed on Cutover Date.
Test Outcome	Port successfully completed and Telephone Number no longer on PLNR.

Day	Carrier	Transaction Type	Description	Code Value
0	D	CNA		n/a
0	D	PLNR update		"D"
1	L	CNA Receipt		n/a
1	D	PLNR update		"E"
3	L	CNA Confirmation		"000"
8	D	CCA		n/a
9	L	CCA Receipt		n/a
11	L	CCA Rejection	Cutover Date and Commencement Time are not as agreed.	"034"
14	D	CCA		n/a
15	L	CCA Receipt		n/a
17	L	CCA Confirmation		"000"
21	L	Cutover complete	No physical transaction	n/a
22	D	PLNR update		"C"
23	D	PLNR update	PLNR entry removed	n/a

Scenario No	CDG03
Pre- Requisite Scenario	CDL01
Test Scenario Type	Successful Port after a CNA Retarget accepted.
Scenario Description	A successful Port from the Losing Carrier to the Donor Carrier after a CNA Retarget has been accepted.
Detailed Test Description	A CNA is sent from the Donor Carrier and receipt acknowledged by the Losing Carrier within 1 Business Day. The CNA confirmed by the Donor Carrier within 5 Business Days. A CNA Retarget is received and confirmed within 1 Business Day. A CCA is received and receipt is sent within 1 Business Day. The CCA confirmed by the Losing Carrier within 3 Business Days. Port is successfully completed on Cutover Date.
Test Outcome	Port successfully completed and Telephone Number no longer on PLNR.

Day	Carrier	Transaction Type	Description	Code Value
0	D	CNA		n/a
0	D	PLNR update		"D"
1	L	CNA Receipt		n/a
1	D	PLNR update		"E"
3	L	CNA Confirmation		"000"
8	D	CNA Retarget		n/a
9	L	CNA Retarget Confirmation		"000"
14	D	CCA		n/a
15	L	CCA Receipt		n/a
17	L	CCA Confirmation		"000"
21	L	Cutover complete	No physical transaction	n/a
22	D	PLNR update		"C"
23	D	PLNR update	PLNR entry removed	n/a

Scenario No	CDG04
Pre- Requisite Scenario	CDL01
Test Scenario Type	Successful Port after CCA rejection and CNA Retarget accepted.
Scenario Description	A successful Port from the Losing Carrier to the Donor Carrier after a CCA is rejected for Response Code 034 (Cutover Date and Commencement Time are not as agreed) and then a CNA Retarget has been accepted.
Detailed Test Description	A CNA is sent from the Donor Carrier and receipt acknowledged by the Losing Carrier within 1 Business Day. The CNA confirmed by the Donor Carrier within 5 Business Days. A CNA Retarget is received and confirmed within 1 Business Day. A CCA is received and receipt acknowledged within 1 Business Day. The CCA is rejected and notification is sent with Response Code 034 (Cutover Date and Commencement Time are not as agreed). A second CCA is received and receipt is sent within 1 Business Day. The CCA confirmed by the Losing Carrier within 3 Business Days. Port is successfully completed on Cutover Date.
Test Outcome	Port successfully completed and Telephone Number no longer on PLNR.

Day	Carrier	Transaction Type	Description	Code Value
0	D	CNA		n/a
0	D	PLNR update		"D"
1	L	CNA Receipt		n/a
1	D	PLNR update		"E"
3	L	CNA Confirmation		"000"
8	D	CNA Retarget		n/a
9	L	CNA Retarget Confirmation		"000"
14	D	CCA		n/a
15	L	CCA Receipt		n/a
17	L	CCA Rejection	Cutover Date and Commencement Time are not as agreed.	"034"
21	D	CCA		n/a
22	L	CCA Receipt		n/a
23	L	CCA Confirmation		"000"

Day	Carrier	Transaction Type	Description	Code Value
30	L	Cutover complete	No physical transaction.	n/a
32	D	PLNR update	Would be updated on Day 31 except it is a Public Holiday.	"C"
33	D	PLNR update	PLNR entry removed	n/a

Scenario No	CDG05
Pre- Requisite Scenario	CDL01
Test Scenario Type	Successful Port after two CNA Retargets accepted.
Scenario Description	A successful Port from the Losing Carrier to the Donor Carrier after two CNA Retargets has been accepted.
Detailed Test Description	A CNA is sent from the Donor Carrier and receipt acknowledged by the Losing Carrier within 1 Business Day. The CNA confirmed by the Losing Carrier within 5 Business Days. A CNA Retarget is received and confirmed within 1 Business Day. A second CNA Retarget is received and confirmed within 1 Business Day. A CCA is received and receipt is sent within 1 Business Day. The CCA confirmed by the Losing Carrier within 3 Business Days. Port is successfully completed on Cutover Date.
Test Outcome	Port successfully completed and Telephone Number no longer on PLNR.

Day	Carrier	Transaction Type	Description	Code Value
0	D	CNA		n/a
0	D	PLNR update		"D"
1	L	CNA Receipt		n/a
1	D	PLNR update		"E"
3	L	CNA Confirmation		"000"
8	D	CNA Retarget		n/a
9	L	CNA Retarget Confirmation		"000"
14	D	CNA Retarget		n/a
15	L	CNA Retarget Confirmation		"000"
21	D	CCA		n/a

22	L	CCA Receipt		n/a
23	L	CCA Confirmation		"000"
30	L	Cutover complete	No physical transaction	n/a
32	D	PLNR update	Would be updated on Day 31 except it is a Public Holiday.	"C"
33	D	PLNR update	PLNR entry removed	n/a

Scenario No	CDG06
Pre- Requisite Scenario	CDL01
Test Scenario Type	Successful Port after Retarget rejection.
Scenario Description	A successful Port from the Losing carrier to the Donor carrier after two CNA Retargets have been accepted and a third Retarget rejected with Response Code 037 (Retarget limit exceeded).
Detailed Test Description	A CNA is sent from the Donor Carrier and receipt acknowledged by the Losing Carrier within 1 Business Day. The CNA confirmed by the Losing Carrier within 5 Business Days. A CNA Retarget is received and confirmed within 1 Business Day. A second CNA Retarget is received and confirmed within 1 Business Day. A third CNA Retarget is received and rejected with Response Code 037 (Retarget limit exceeded). A CCA is received and receipt is sent within 1 Business Day. The CCA confirmed by the Losing Carrier within 3 Business Days. Port is successfully completed on Cutover Date.
Test Outcome	Port successfully completed and Telephone Number no longer on PLNR.

Day	Carrier	Transaction Type	Description	Code Value
0	D	CNA		n/a
0	D	PLNR update		"D"
1	L	CNA Receipt		n/a
1	D	PLNR update		"E"
3	L	CNA Confirmation		"000"
8	D	CNA Retarget		n/a
9	L	CNA Retarget Confirmation		"000"

Day	Carrier	Transaction Type	Description	Code Value
14	D	CNA Retarget		n/a
15	L	CNA Retarget Confirmation		"000"
21	D	CNA Retarget		n/a
22	L	CNA Retarget Rejection	Retarget limit exceeded	"037"
30	D	CCA		n/a
32	L	CCA Receipt	Would be sent on Day 31 except it is a Public Holiday.	n/a
35	L	CCA Confirmation		"000"
38	L	Cutover complete	No physical transaction	n/a
39	D	PLNR update		"C"
40	D	PLNR update	PLNR entry removed	n/a

Scenario No	CDG07
Pre- Requisite Scenario	CDL01
Test Scenario Type	Successful Port after Withdrawal Rejection.
Scenario Description	A successful Port from the Losing carrier to the Donor carrier after CNA Withdrawal is rejected with Response Code 055 (CCA Cutover Notification exists for the batch reference number for same Gaining Carrier).
Detailed Test Description	A CNA is sent from the Donor Carrier and receipt acknowledged by the Losing Carrier within 1 Business Day. The CNA confirmed by the Losing Carrier within 5 Business Days. A CCA is received and receipt acknowledged within 1 Business Day. A CNA Withdrawal is received and rejected with Response Code 055 (CCA Cutover Notification exists for the batch reference number for same Gaining Carrier). Port is successfully completed on Cutover Date.
Test Outcome	Port successfully completed and Telephone Number no longer on PLNR.

Day	Carrier	Transaction Type	Description	Code Value
0	D	CNA		n/a
0	D	PLNR update		"D"
1	L	CNA Receipt		n/a

1	D	PLNR update		"E"
3	L	CNA Confirmation		"000"
8	D	CCA		n/a
9	L	CCA Receipt		n/a
11	L	CCA Confirmation		"000"
14	D	CNA Withdrawal		n/a
15	L	CNA Withdrawal Rejection	CCA Cutover Notification exist for the batch reference number for same Gaining Carrier.	"055"
18	L	Cutover complete	No physical transaction	n/a
19	D	PLNR update		"C"
21	D	PLNR update	Would be updated on Day 20 except it is a Sunday. PLNR entry removed	n/a

Scenario No	CDG08
Pre- Requisite Scenario	CDL01
Test Scenario Type	Successful Port after two Retargets Accepted and CCA Withdrawal Rejection.
Scenario Description	A successful Port from the Losing carrier to the Donor carrier after two Retargets (CNA and CCA) have been accepted and CCA Withdrawal is rejected with Response Code 032 (Insufficient notification timeframe). Withdrawal would be received on last day of Port window .
Detailed Test Description	A CNA is sent from the Gaining Carrier and receipt acknowledged by the Donor Carrier within 1 Business Day. The CNA confirmed by the Donor Carrier within 5 Business Days. A CNA Retarget is received and confirmed within 1 Business Day. A CCA is received and receipt acknowledged within 1 Business Day. A CCA Retarget is received and confirmed within 3 Business Day. A CCA Withdrawal is received and rejected with Response Code 032 (Insufficient notification timeframe). Port is successfully completed on Cutover Date.
Test Outcome	Port successfully completed and Telephone Number no longer on PLNR.

Day	Carrier	Transaction Type	Description	Code Value
-----	---------	------------------	-------------	------------

Day	Carrier	Transaction Type	Description	Code Value
0	D	CNA		n/a
0	D	PLNR update		"D"
1	L	CNA Receipt		n/a
1	D	PLNR update		"E"
3	L	CNA Confirmation		"000"
8	D	CNA Retarget		n/a
9	L	CNA Retarget Confirmation		"000"
14	D	CCA		n/a
15	L	CCA Receipt		n/a
17	L	CCA Confirmation		"000"
21	D	CCA Retarget		n/a
22	L	CCA Retarget Receipt		
23	L	CCA Retarget Confirmation		"000"
30	D	CCA Withdrawal		n/a
32	L	CCA Withdrawal Rejection	Insufficient notification timeframe. Would be sent on Day 31 except it is a Public Holiday.	"032"
32	D	Cutover complete	No physical transaction	n/a
33	D	PLNR update		"C"
35	D	PLNR update	Would be updated on Day 34 except it is a Sunday. PLNR entry removed	n/a

Scenario No	CDG09
Pre- Requisite Scenario	CDL01
Test Scenario Type	Successful CNA Withdrawal.
Scenario Description	A Port Request is terminated by a successful Withdrawal transaction.
Detailed Test Description	A CNA is sent from the Donor Carrier and receipt acknowledged by the Losing Carrier within 1 Business Day. The CNA confirmed by the Losing Carrier within 5 Business Days. The CNA Withdrawal is received and confirmed by the Losing Carrier within 1 Business Day.
Test Outcome	The Port is successfully Withdrawn and the Telephone Number remains on the Donor Carrier's PLNR.

Day	Carrier	Transaction Type	Description	Code Value
0	D	CNA		n/a
0	D	PLNR update		"D"
1	L	CNA Receipt		n/a
1	D	PLNR update		"E"
3	L	CNA Confirmation		"000"
8	D	CNA Withdrawal Notification		n/a
9	L	CNA Withdrawal Confirmation		"000"
10	D	PLNR update		"F"
11	D	PLNR update	PLNR entry restored	"space"

Scenario No	CDG10
Pre- Requisite Scenario	CDL01
Test Scenario Type	Successful CNA Withdrawal after two Retargets Accepted.
Scenario Description	A Port Request is terminated by a successful Withdrawal transaction after two CNA Retargets have been accepted.
Detailed Test Description	A CNA is sent from the Donor Carrier and receipt acknowledged by the Losing Carrier within 1 Business Day. The CNA is confirmed by the Losing Carrier within 5 Business Days. A CNA Retarget is received and confirmed within 1 Business Day. A second CNA Retarget is received and confirmed within 1 Business Day The CNA Withdrawal is received and confirmed by the Losing Carrier within 1 Business Day.
Test Outcome	The Port is successfully Withdrawn and the Telephone Number remains on the Donor Carrier's PLNR.

Day	Carrier	Transaction Type	Description	Code Value
0	D	CNA		n/a
0	D	PLNR update		"D"
1	L	CNA Receipt		n/a
1	D	PLNR update		"E"
3	L	CNA Confirmation		"000"
8	D	CNA Retarget		n/a
9	L	CNA Retarget Confirmation		"000"
14	D	CNA Retarget		n/a
15	L	CNA Retarget Confirmation		"000"
21	D	CNA Withdrawal Notification		n/a
22	L	CNA Withdrawal Confirmation		"000"
23	D	PLNR update		"F"
26	D	PLNR update	Would be updated on Day 24 except it and Day 25 are both Public Holidays. PLNR entry restored	"space"

Scenario No	CDG11
Pre- Requisite Scenario	CDL01
Test Scenario Type	Successful CCA Withdrawal.
Scenario Description	A Port Request is terminated by a successful CCA Withdrawal transaction.
Detailed Test Description	A CNA is sent from the Donor Carrier and receipt acknowledged by the Losing Carrier within 1 Business Day. The CNA confirmed by the Losing Carrier within 5 Business Days. A CCA is received and receipt acknowledged within 1 Business Day. A CCA Withdrawal is received and confirmed by the Losing Carrier within 1 Business Day.
Test Outcome	The Port is successfully Withdrawn and the Telephone Number remains on the Donor Carrier's PLNR.

Day	Carrier	Transaction Type	Description	Code Value
0	D	CNA		n/a
0	D	PLNR update		"D"
1	L	CNA Receipt		n/a
1	D	PLNR update		"E"
3	L	CNA Confirmation		"000"
8	D	CCA		n/a
9	L	CCA Receipt		n/a
11	L	CCA Confirmation		"000"
14	D	CCA Withdrawal		n/a
15	L	CCA Withdrawal Confirmation		"000"
16	D	PLNR update		"F"
17	D	PLNR update	PLNR entry restored	"space"

Scenario No	CDG12
Pre- Requisite Scenario	CDL01
Test Scenario Type	Expiry
Scenario Description	A Port Request is terminated by the generation of an Expiry Notification.
Detailed Test Description	A CNA is sent from the Donor Carrier and receipt acknowledged by the Losing Carrier within 1 Business Day. The CNA is confirmed by the Losing Carrier within 5 Business Days. No CCA Cutover Notification is received within 60 calendar days. The Losing Carrier cancels the CNA and sends a CNA Expiry Notification the Business Day following the expiry date.
Test Outcome	The Port Expires and the Telephone Number remains on the Donor Carrier's PLNR.

Day	Carrier	Transaction Type	Description	Code Value
0	D	CNA		n/a
0	D	PLNR update		"D"
1	L	CNA Receipt		n/a
1	D	PLNR update		"E"
2	L	CNA Confirmation		"000"
60	L	CNA Expiry Notification		n/a
61	D	PLNR update		"F"
63	D	PLNR update	Would be updated on Day 62 except it is a Sunday. PLNR entry restored	"space"

Scenario No	CDG13
Pre- Requisite Scenario	CDL01
Test Scenario Type	Expiry after one CNA Retarget accepted.
Scenario Description	A Port Request is terminated by the generation of an Expiry Notification after one CNA Retarget has been accepted.
Detailed Test Description	A CNA is sent from the Donor Carrier and receipt acknowledged by the Losing Carrier within 1 Business Day. The CNA confirmed by the Losing Carrier within 5 Business Days. . A CNA Retarget is received and confirmed within 1 Business Day. No CCA Cutover Notification is received within 60 calendar days. The Losing Carrier cancels the CNA and sends a CNA Expiry Notification the Business Day following the expiry date.
Test Outcome	The Port Expires and the Telephone Number remains on the Donor Carrier's PLNR.

Day	Carrier	Transaction Type	Description	Code Value
0	D	CNA		n/a
0	D	PLNR update		"D"
1	L	CNA Receipt		n/a
1	D	PLNR update		"E"
3	L	CNA Confirmation		"000"
8	D	CNA Retarget		n/a
9	L	CNA Retarget Confirmation		"000"
70	L	CNA Expiry Notification	Would be sent on Day 68 except it is Saturday.	n/a
71	D	PLNR update		"F"
72	D	PLNR update	PLNR entry restored.	"space"

Scenario No	CDG14
Pre- Requisite Scenario	CDL01
Test Scenario Type	Expiry after two CNA Retargets accepted.
Scenario Description	A Port Request is terminated by the generation of an Expiry Notification after two CNA Retargets have been accepted.
Detailed Test Description	A CNA is sent from the Donor Carrier and receipt acknowledged by the Losing Carrier within 1 Business Day. The CNA confirmed by the Losing Carrier within 5 Business Days. A CNA Retarget is received and confirmed within 1 Business Day. A second CNA Retarget is received and confirmed within 1 Business Day. No CCA Cutover Notification is received within 60 calendar days. The Losing Carrier cancels the CNA and sends a CNA Expiry Notification the Business Day following the expiry date.
Test Outcome	The Port Expires and the Telephone Number remains on the Donor Carrier's PLNR.

Day	Carrier	Transaction Type	Description	Code Value
0	D	CNA		n/a
0	D	PLNR update		"D"
1	L	CNA Receipt		n/a
1	D	PLNR update		"E"
3	L	CNA Confirmation		"000"
8	D	CNA Retarget		n/a
9	L	CNA Retarget Confirmation		"000"
14	D	CNA Retarget		n/a
15	L	CNA Retarget Confirmation		"000"
74	L	CNA Expiry Notification		n/a
75	D	PLNR update		"F"
77	D	PLNR update	Would be updated on Day 76 except it is a Sunday. PLNR entry restored	"space"

Scenario No	CDG15
Pre- Requisite Scenario	CDL01
Test Scenario Type	Expiry after Withdrawal rejection.
Scenario Description	A Port Request is terminated by the generation of an Expiry Notification after CNA Withdrawal has been rejected with Response Code 032 (Insufficient notification timeframe).
Detailed Test Description	A CNA is sent from the Donor Carrier and receipt acknowledged by the Losing Carrier within 1 Business Day. The CNA confirmed by the Losing Carrier within 5 Business Days. . A CNA Withdrawal is received and rejected within 1 Business Day with Response Code 032 (Insufficient notification timeframe). No CCA Cutover Notification is received within 60 calendar days. The Losing Carrier cancels the CNA and sends a CNA Expiry Notification the Business Day following the expiry date.
Test Outcome	The Port Expires and the Telephone Number remains on the Donor Carrier's PLNR.

Day	Carrier	Transaction Type	Description	Code Value
0	D	CNA		n/a
0	D	PLNR update		"D"
1	L	CNA Receipt		n/a
1	D	PLNR update		"E"
3	L	CNA Confirmation		"000"
59	D	CNA Withdrawal		n/a
60	L	CNA Expiry Notification		n/a
60	L	CNA Withdrawal Rejection	Insufficient notification timeframe.	"032"
61	D	PLNR update		"F"
63	D	PLNR update	Would be updated on Day 62 except it is a Sunday. PLNR entry restored.	"space"

Scenario No	CDG16
Pre- Requisite Scenario	CDL01
Test Scenario Type	Successful Port after one CCA Retarget.
Scenario Description	A successful Port from the Losing Carrier to the Donor Carrier after a CCA Retarget has been accepted.
Detailed Test Description	A CNA is sent from the Donor Carrier and receipt acknowledged by the Losing Carrier within 1 Business Day. The CNA confirmed by the Losing Carrier within 5 Business Days. A CCA is received and receipt is sent within 1 Business Day. The CCA confirmed by the Losing Carrier within 3 Business Days. A CCA Retarget is received, receipt acknowledged within 1 Business Day and confirmed within 3 Business Days. Port is successfully completed on Cutover Date.
Test Outcome	Port successfully completed and Telephone Number no longer on PLNR.

Day	Carrier	Transaction Type	Description	Code Value
0	D	CNA		n/a
0	D	PLNR update		"D"
1	L	CNA Receipt		n/a
1	D	PLNR update		"E"
3	L	CNA Confirmation		"000"
8	D	CCA		n/a
9	L	CCA Receipt		n/a
11	L	CCA Confirmation		"000"
14	D	CCA Retarget		n/a
15	L	CCA Retarget Receipt		n/a
17	L	CCA Retarget Confirmation		"000"
21	L	Cutover complete	No physical transaction	n/a
22	D	PLNR update		"C"
23	D	PLNR update	PLNR entry removed	n/a

Scenario No	CDG17
Pre- Requisite Scenario	CDL01
Test Scenario Type	Successful Port after two CCA Retargets.
Scenario Description	A successful Port from the Losing Carrier to the Donor Carrier after two CCA Retargets have been accepted.
Detailed Test Description	A CNA is sent from the Donor Carrier and receipt acknowledged by the Losing Carrier within 1 Business Day. The CNA confirmed by the Donor Carrier within 5 Business Days. A CCA is received and receipt is sent within 1 Business Day. The CCA confirmed by the Losing Carrier within 3 Business Days. A CCA Retarget is received, receipt acknowledged within 1 Business Day and confirmed within 3 Business Days. A second CCA Retarget is received, receipt acknowledged within 1 Business Day and confirmed within 3 Business Days. Port is successfully completed on Cutover Date.
Test Outcome	Port successfully completed and Telephone Number no longer on PLNR.

Day	Carrier	Transaction Type	Description	Code Value
0	D	CNA		n/a
0	D	PLNR update		"D"
1	L	CNA Receipt		n/a
1	D	PLNR update		"E"
3	L	CNA Confirmation		"000"
8	D	CCA		n/a
9	L	CCA Receipt		n/a
11	L	CCA Confirmation		"000"
14	D	CCA Retarget		n/a
15	L	CCA Retarget Receipt		n/a
17	L	CCA Retarget Confirmation		"000"
21	D	CCA Retarget		n/a
22	L	CCA Retarget Receipt		n/a
23	L	CCA Retarget Confirmation		"000"
30	L	Cutover complete	No physical transaction	n/a

Day	Carrier	Transaction Type	Description	Code Value
32	D	PLNR update	Would be updated on Day 31 except it is a Public Holiday.	"C"
33	D	PLNR update	PLNR entry removed	n/a

Scenario No	CDG18
Pre- Requisite Scenario	CDL01
Test Scenario Type	Successful Port after one CNA and one CCA Retarget.
Scenario Description	A successful Port from the Losing Carrier to the Donor Carrier after a CNA Retarget and a CCA Retarget have been accepted.
Detailed Test Description	A CNA is sent from the Donor Carrier and receipt acknowledged by the Losing Carrier within 1 Business Day. The CNA confirmed by the Losing Carrier within 5 Business Days. A CNA Retarget is received and confirmed within 1 Business Day. A CCA is received and receipt is sent within 1 Business Day. The CCA confirmed by the Losing Carrier within 3 Business Days. A CCA Retarget is received, receipt acknowledged within 1 Business Day and confirmed within 3 Business Days. Port is successfully completed on Cutover Date.
Test Outcome	Port successfully completed and Telephone Number no longer on PLNR.

Day	Carrier	Transaction Type	Description	Code Value
0	D	CNA		n/a
0	D	PLNR update		"D"
1	L	CNA Receipt		n/a
1	D	PLNR update		"E"
3	L	CNA Confirmation		"000"
8	D	CNA Retarget		n/a
9	L	CNA Retarget Confirmation		"000"
14	D	CCA		n/a
15	L	CCA Receipt		n/a

17	L	CCA Confirmation		"000"
21	D	CCA Retarget		n/a
22	L	CCA Retarget Receipt		n/a
23	L	CCA Retarget Confirmation		"000"
30	L	Cutover complete	No physical transaction	n/a
32	D	PLNR update	Would be updated on Day 31 except it is a Public Holiday.	"C"
33	D	PLNR update	PLNR entry removed	n/a

Scenario No	CDG19
Pre- Requisite Scenario	CDL19
Test Scenario Type	Successful Port after Retarget rejection
Scenario Description	A successful Port from the Losing Carrier to the Donor Carrier after two Retargets (CNA and CCA) have been accepted and a third CCA Retarget rejected with Response Code 037 (Retarget limit exceeded).
Detailed Test Description	A CNA is sent from the Donor Carrier and receipt acknowledged by the Losing Carrier within 1 Business Day. The CNA confirmed by the Losing Carrier within 5 Business Days. A CNA Retarget is received and confirmed within 1 Business Day. A CCA is received and receipt is sent within 1 Business Day. The CCA confirmed by the Losing Carrier within 3 Business Days. A CCA Retarget is received, receipt acknowledged within 1 Business Day and confirmed within 3 Business Days. A second CCA Retarget is received and rejected with Response Code 037 (Retarget limit exceeded).Port is successfully completed on Cutover Date.
Test Outcome	Port successfully completed and Telephone Number no longer on PLNR.

Day	Carrier	Transaction Type	Description	Code Value
0	D	CNA		n/a
0	D	PLNR update		"D"
1	L	CNA Receipt		n/a
1	D	PLNR update		"E"
3	L	CNA Confirmation		"000"

Day	Carrier	Transaction Type	Description	Code Value
8	D	CNA Retarget		n/a
9	L	CNA Retarget Confirmation		"000"
14	D	CCA		n/a
15	L	CCA Receipt		n/a
17	L	CCA Confirmation		"000"
21	D	CCA Retarget		n/a
22	L	CCA Retarget Receipt		n/a
23	L	CCA Retarget Confirmation		"000"
30	D	CCA Retarget		n/a
32	L	CCA Retarget Receipt	Would be sent on Day 31 except it is a Public Holiday.	n/a
35	L	CCA Retarget Rejection	Retarget limit exceeded	"037"
38	L	Cutover complete	No physical transaction	n/a
39	D	PLNR update		"C"
40	D	PLNR update	PLNR entry removed	n/a

Scenario No	CDG20
Pre- Requisite Scenario	CDL19
Test Scenario Type	CCA Withdrawal after two Retargets
Scenario Description	A Port Request is successfully terminated after a CNA Retarget and a CCA Retarget have been accepted.
Detailed Test Description	A CNA is sent from the Donor Carrier and receipt acknowledged by the Losing Carrier within 1 Business Day. The CNA confirmed by the Losing Carrier within 5 Business Days. A CNA Retarget is received and confirmed within 1 Business Day. A CCA is received and receipt is sent within 1 Business Day. The CCA confirmed by the Losing Carrier within 3 Business Days. A CCA Retarget is received, receipt acknowledged within 1 Business Day and confirmed within 3 Business Days. A CCA Withdrawal is received and accepted.
Test Outcome	The Port is successfully cancelled and the Telephone Number remains on the Donor Carriers PLNR.

Day	Carrier	Transaction Type	Description	Code Value
0	D	CNA		n/a
0	D	PLNR update		"D"
1	L	CNA Receipt		n/a
1	D	PLNR update		"E"
3	L	CNA Confirmation		"000"
8	D	CNA Retarget		n/a
9	L	CNA Retarget Confirmation		"000"
14	D	CCA		n/a
15	L	CCA Receipt		n/a
17	L	CCA Confirmation		"000"
21	D	CCA Retarget		n/a
22	L	CCA Retarget Receipt		n/a
23	L	CCA Retarget Confirmation		"000"
30	D	CCA Withdrawal		n/a
32	L	CCA Withdrawal Confirmation	Would be sent on Day 31 except it is a Public Holiday.	"000"
33	D	PLNR update		"F"
35	D	PLNR update	Would be updated on Day 34 except it is a Sunday. PLNR entry restored	"space"

Scenario No	CDG22
Pre- Requisite Scenario	CDL01
Test Scenario Type	Rejected Port
Scenario Description	A Port Request is rejected for Response Code 060 (Telephone Numbers in the batch are not inclusive of all Telephone Numbers associated to the Cat C product).
Detailed Test Description	A CNA is sent from the Donor Carrier and receipt acknowledged by the Losing Carrier within 1 Business Day. The CNA is rejected by the Losing Carrier within 5 Business Days rejected for Response Code 060 (Telephone Numbers in the batch are not inclusive of all Telephone Numbers associated to the Cat C product).
Test Outcome	The Port is rejected and the Telephone Number remains on the Donor Carrier's PLNR.

Day	Carrier	Transaction Type	Description	Code Value
0	D	CNA		n/a
0	D	PLNR update		"D"
1	L	CNA Receipt		n/a
1	D	PLNR update		"E"
3	L	CNA Rejection	Telephone Numbers in the batch are not inclusive of all Telephone Numbers associated to the Cat C product.	"060"
4	D	PLNR update		"F"
5	D	PLNR update	PLNR entry restored	"space"

Scenario No	CDG23
Pre- Requisite Scenario	CDL01
Test Scenario Type	Expiry after Emergency Return.
Scenario Description	A Port Request is terminated by the generation of an Expiry Notification after an Emergency Return.
Detailed Test Description	A CNA is sent from the Donor Carrier and receipt acknowledged by the Losing Carrier within 1 Business Day. The CNA confirmed by the Losing Carrier within 5 Business Days. A CCA is received and receipt acknowledged within 1 Business Day. The CCA confirmed by the Losing Carrier within 3 Business Days. Port is successfully completed on Cutover Date. An Emergency Return is called and the Port is allowed to expire.
Test Outcome	The Port Expires and the Telephone Number remains on the Donor Carriers PLNR.

Day	Carrier	Transaction Type	Description	Code Value
0	D	CNA		n/a
0	D	PLNR update		"D"
1	L	CNA Receipt		n/a
1	D	PLNR update		"E"
3	L	CNA Confirmation		"000"
8	D	CCA		n/a
9	L	CCA Receipt		n/a
11	L	CCA Confirmation		"000"
15	L	Cutover complete	No physical transaction	n/a
	D	Emergency Return	The Emergency Return is actioned within the Emergency Return period. This is a manual action.	n/a
60	L	CNA Expiry Notification		n/a
61	D	PLNR update		"F"
63	D	PLNR update	Would be updated on Day 62 except it is a Sunday. PLNR entry restored	"space"

Scenario No	CDG24
Pre- Requisite Scenario	CDL01
Test Scenario Type	CCA after Emergency Return
Scenario Description	A successful Port from the Losing Carrier to the Donor Carrier after Emergency Return has occurred and new CCA accepted..
Detailed Test Description	A CNA is sent from the Donor Carrier and receipt acknowledged by the Losing Carrier within 1 Business Day. The CNA confirmed by the Losing Carrier within 5 Business Days. A CCA is received and receipt acknowledged within 1 Business Day. The CCA confirmed by the Losing Carrier within 3 Business Days. Port is successfully completed on Cutover Date. An Emergency Return is called. A CCA is received and receipt is sent within 1 Business Day. The CCA confirmed by the Losing Carrier within 3 Business Days. Port is successfully completed on Cutover Date.
Test Outcome	Port successfully completed and Telephone Number no longer on PLNR.

Day	Carrier	Transaction Type	Description	Code Value
0	D	CNA		n/a
0	D	PLNR update		"D"
1	L	CNA Receipt		n/a
1	D	PLNR update		"E"
3	L	CNA Confirmation		"000"
8	D	CCA		n/a
9	L	CCA Receipt		n/a
11	L	CCA Confirmation		"000"
15	L	Cutover complete	No physical transaction	n/a
	D	Emergency Return	The Emergency Return is actioned within the Emergency Return period. This is a manual action.	n/a
21	D	CCA		n/a
22	L	CCA Receipt		n/a
23	L	CCA Confirmation		"000"
30	L	Cutover complete	No physical transaction	n/a

Day	Carrier	Transaction Type	Description	Code Value
32	D	PLNR update	Would be updated on Day 31 except it is a Public Holiday.	"C"
33	D	PLNR update	PLNR entry removed	n/a

Scenario No	CDG25
Pre- Requisite Scenario	CDL01
Test Scenario Type	CCA Retarget after Emergency Return.
Scenario Description	A successful Port from the Losing Carrier to the Donor Carrier after Emergency Return has occurred and new CCA Retarget accepted.
Detailed Test Description	A CNA is sent from the Donor Carrier and receipt acknowledged by the Losing Carrier within 1 Business Day. The CNA confirmed by the Losing Carrier within 5 Business Days. A CCA is received and receipt acknowledged within 1 Business Day. The CCA confirmed by the Losing Carrier within 3 Business Days. Port is successfully completed on Cutover Date. An Emergency Return is called. A CCA Retarget is received and receipt is sent within 1 Business Day. The CCA Retarget confirmed by the Losing Carrier within 3 Business Days. Port is successfully completed on Cutover Date.
Test Outcome	Port successfully completed and Telephone Number no longer on PLNR.

Day	Carrier	Transaction Type	Description	Code Value
0	G	CNA		n/a
0	D	PLNR update		"D"
1	D	CNA Receipt		n/a
1	D	PLNR update		"E"
3	D	CNA Confirmation		"000"
8	G	CCA		n/a
9	D	CCA Receipt		n/a
11	D	CCA Confirmation		"000"
15	D	Cutover complete	No physical transaction	n/a

Day	Carrier	Transaction Type	Description	Code Value
	G	Emergency Return	The Emergency Return is actioned within the Emergency Return period. This is a manual action.	n/a
21	G	CCA Retarget		n/a
22	D	CCA Retarget Receipt		n/a
23	D	CCA Retarget Confirmation		"000"
30	D	Cutover complete	No physical transaction	n/a
32	D	PLNR update	Would be updated on Day 31 except it is a Public Holiday.	"C"
33	D	PLNR update	PLNR entry removed	n/a

Scenario No	CDG26
Pre- Requisite Scenario	CDL01
Test Scenario Type	CCA Withdraw after Emergency Return.
Scenario Description	A Port Request is successfully terminated after an Emergency Return has occurred.
Detailed Test Description	A CNA is sent from the Gaining Carrier and receipt acknowledged by the Donor Carrier within 1 Business Day. The CNA confirmed by the Donor Carrier within 5 Business Days. A CCA is received and receipt acknowledged within 1 Business Day. The CCA confirmed by the Donor Carrier within 3 Business Days. Port is successfully completed on Cutover Date. An Emergency Return is called. A CCA Withdrawal is received and confirmation is sent within 1 Business Day.
Test Outcome	The Port is successfully cancelled and the Telephone Number remains on the Donor Carrier's PLNR.

Day	Carrier	Transaction Type	Description	Code Value
0	D	CNA		n/a
0	D	PLNR update		"D"
1	L	CNA Receipt		n/a

1	D	PLNR update		"E"
3	L	CNA Confirmation		"000"
8	D	CCA		n/a
9	L	CCA Receipt		n/a
11	L	CCA Confirmation		"000"
15	L	Cutover complete	No physical transaction	n/a
	D	Emergency Return	The Emergency Return is actioned within the Emergency Return period. This is a manual action	n/a
21	D	CCA Withdrawal		n/a
22	L	CCA Withdrawal Confirmation		"000"
23	D	PLNR update		"000"
26	D	PLNR update	Would be updated on Day 24 except it and Day 25 are both Public Holidays. PLNR entry restored	"space"

3.3 Third Party

Scenario No	CTP01
Pre- Requisite Scenario	CDL01
Test Scenario Type	Successful Transfer
Scenario Description	A successful Transfer by the Donor Carrier from the Losing Carrier to the Gaining Carrier.
Detailed Test Description	A TCNA is sent from the Gaining Carrier and receipt acknowledged by the Donor Carrier within 1 Business Day. The TCNA is confirmed by the Donor Carrier within 2 Business Days. A TCCA is received and receipt acknowledged within 1 Business Day. The TCCA is confirmed by the Donor Carrier within 2 Business Days. Transfer is successfully completed on Cutover Date.
Test Outcome	Transfer successfully completed and the PLNR points the Telephone Number to the Gaining Carrier.

Day	Carrier	Transaction Type	Description	Code Value
0	G	TCNA		n/a
1	D	TCNA Receipt		n/a
2	D	TCNA Confirmation		"000"
2	D	PLNR update		"D"
3	D	PLNR update		"E"
8	G	TCCA		n/a
9	D	TCCA Receipt		n/a
10	D	TCCA Confirmation		"000"
15	D	Cutover complete	No physical transaction	n/a
16	D	PLNR update		"B"
17	D	PLNR update	PLNR entry points to Gaining Carrier.	"space"

Scenario No	CTP02
Pre- Requisite Scenario	CDL01
Test Scenario Type	Successful Transfer after TCCA Rejection.
Scenario	A successful Transfer by the Donor Carrier from the Losing

Description	Carrier to the Gaining Carrier after a TCCA is rejected for Response Code 034 (Cutover Date and Commencement Time are not as agreed).
Detailed Test Description	A TCNA is sent from the Gaining Carrier and receipt acknowledged by the Donor Carrier within 1 Business Day. The TCNA is confirmed by the Donor Carrier within 2 Business Days. A TCCA is received and receipt acknowledged within 1 Business Day. The TCCA is rejected by the Donor Carrier within 2 Business Days. A second TCCA is received and receipt acknowledged within 1 Business Day. The TCCA is confirmed by the Donor Carrier within 2 Business Days. Transfer is successfully completed on Cutover Date.
Test Outcome	Transfer successfully completed and the PLNR points the Telephone Number to the Gaining Carrier.

Day	Carrier	Transaction Type	Description	Code Value
0	G	TCNA		n/a
1	D	TCNA Receipt		n/a
2	D	TCNA Confirmation		"000"
2	D	PLNR update		"D"
3	D	PLNR update		"E"
8	G	TCCA		n/a
9	D	TCCA Receipt		n/a
10	D	TCCA Reject	Cutover Date and Commencement Time are not as agreed	"034"
11	G	TCCA		n/a
14	D	TCCA Receipt		n/a
15	D	TCCA Confirmation		"000"
21	D	Cutover complete	No physical transaction	n/a
22	D	PLNR update		"B"
23	D	PLNR update	PLNR entry points to Gaining Carrier.	"space"

Scenario No	CTP03
Pre- Requisite Scenario	CDL01
Test Scenario Type	Successful Transfer after TCCA Retarget .

Scenario Description	A successful Transfer by the Donor Carrier from the Losing Carrier to the Gaining Carrier after one Retarget (TCCA) has been accepted.
Detailed Test Description	A TCNA is sent from the Gaining Carrier and receipt acknowledged by the Donor Carrier within 1 Business Day. The TCNA is confirmed by the Donor Carrier within 2 Business Days. A TCCA is received and receipt acknowledged within 1 Business Day. The TCCA is confirmed by the Donor Carrier within 2 Business Days. A TCCA Retarget is received and receipt acknowledged within 1 Business Day. The TCCA Retarget is confirmed by the Donor Carrier within 2 Business Days. Transfer is successfully completed on Cutover Date.
Test Outcome	Transfer successfully completed and the PLNR points the Telephone Number to the Gaining Carrier.

Day	Carrier	Transaction Type	Description	Code Value
0	G	TCNA		n/a
1	D	TCNA Receipt		n/a
2	D	TCNA Confirmation		"000"
2	D	PLNR update		"D"
3	D	PLNR update		"E"
8	G	TCCA		n/a
9	D	TCCA Receipt		n/a
10	D	TCCA Confirmation		"000"
11	G	TCCA Retarget		n/a
14	D	TCCA Retarget Receipt		n/a
15	D	TCCA Retarget Confirmation		"000"
21	D	Cutover complete	No physical transaction.	n/a
22	D	PLNR update		"B"
23	D	PLNR update	PLNR entry points to Gaining Carrier.	"space"

Scenario No	CTP04
Pre- Requisite Scenario	CDL01
Test Scenario Type	Successful Transfer after two TCCA Retargets .
Scenario Description	A successful Transfer by the Donor Carrier from the Losing Carrier to the Gaining Carrier after two Retargets (TCCA) have been accepted.
Detailed Test Description	A TCNA is sent from the Gaining Carrier and receipt acknowledged by the Donor Carrier within 1 Business Day. The TCNA is confirmed by the Donor Carrier within 2 Business Days. A TCCA is received and receipt acknowledged within 1 Business Day. The TCCA is confirmed by the Donor Carrier within 2 Business Days. A TCCA Retarget is received and receipt acknowledged within 1 Business Day. The TCCA Retarget is confirmed by the Donor Carrier within 2 Business Days. A second TCCA Retarget is received and receipt acknowledged within 1 Business Day. The second TCCA Retarget is confirmed by the Donor Carrier within 2 Business Days. The Transfer is successfully completed on Cutover Date.
Test Outcome	Transfer successfully completed and the PLNR points the Telephone Number to the Gaining Carrier.

Day	Carrier	Transaction Type	Description	Code Value
0	G	TCNA		n/a
1	D	TCNA Receipt		n/a
2	D	TCNA Confirmation		"000"
2	D	PLNR update		"D"
3	D	PLNR update		"E"
8	G	TCCA		n/a
9	D	TCCA Receipt		n/a
10	D	TCCA Confirmation		"000"
11	G	TCCA Retarget		n/a
14	D	TCCA Retarget Receipt		n/a
15	D	TCCA Retarget Confirmation		"000"
21	G	TCCA Retarget		n/a
22	D	TCCA Retarget		n/a

Day	Carrier	Transaction Type	Description	Code Value
		Receipt		
23	D	TCCA Retarget Confirmation		"000"
30	D	Cutover complete	No physical transaction	n/a
32	D	PLNR update	Would be updated on Day 31 except it is a Public Holiday.	"B"
33	D	PLNR update	PLNR entry points to Gaining Carrier.	"space"

Scenario No	CTP05
Pre- Requisite Scenario	CDL01
Test Scenario Type	Successful Transfer after TCCA Retarget rejection.
Scenario Description	A successful Transfer by the Donor Carrier from the Losing Carrier to the Gaining Carrier after two Retargets (TCCA) have been accepted and a third TCCA Retarget rejected with Response Code 037 (Retarget limit exceeded).
Detailed Test Description	A TCNA is sent from the Gaining Carrier and receipt acknowledged by the Donor Carrier within 1 Business Day. The TCNA is confirmed by the Donor Carrier within 2 Business Days. A TCCA is received and receipt acknowledged within 1 Business Day. The TCCA is confirmed by the Donor Carrier within 2 Business Days. A second TCCA Retarget is received and receipt acknowledged within 1 Business Day. The TCCA Retarget is confirmed by the Donor Carrier within 2 Business Days. The second TCCA Retarget is confirmed by the Donor Carrier within 2 Business Days. A third TCCA Retarget is received and receipt acknowledged within 1 Business Day. The third TCCA Retarget is rejected with Response code 037 (Retarget limit exceeded) by the Donor Carrier within 2 Business Days The Transfer is successfully completed on Cutover Date.
Test Outcome	Transfer successfully completed and the PLNR points the Telephone Number to the Gaining Carrier.

Day	Carrier	Transaction Type	Description	Code Value
0	G	TCNA		n/a
1	D	TCNA Receipt		n/a

Day	Carrier	Transaction Type	Description	Code Value
2	D	TCNA Confirmation		"000"
2	D	PLNR update		"D"
3	D	PLNR update		"E"
8	G	TCCA		n/a
9	D	TCCA Receipt		n/a
10	D	TCCA Confirmation		"000"
11	G	TCCA Retarget		n/a
14	D	TCCA Retarget Receipt		n/a
15	D	TCCA Retarget Confirmation		"000"
21	G	TCCA Retarget		n/a
22	D	TCCA Retarget Receipt		n/a
23	D	TCCA Retarget Confirmation		"000"
30	G	TCCA Retarget		n/a
32	D	TCCA Retarget Receipt	Would be sent on Day 31 except it is a Public Holiday.	n/a
35	D	TCCA Retarget Rejection	Retarget limit exceeded	"037"
38	D	Cutover complete	No physical transaction	n/a
39	D	PLNR update		"B"
40	D	PLNR update	PLNR entry points to Gaining Carrier	"space"

Scenario No	CTP06
Pre- Requisite Scenario	CDL01
Test Scenario Type	Successful Transfer after TCNA Withdrawal Rejection.
Scenario Description	A successful Transfer by the Donor Carrier from the Losing Carrier to the Gaining Carrier after TCNA Withdrawal is rejected with Response Code 055 (TCCA Cutover Notification exist for the batch reference number for same Gaining Carrier).
Detailed Test Description	A TCNA is sent from the Gaining Carrier and receipt acknowledged by the Donor Carrier within 1 Business Day.

	The TCNA is confirmed by the Donor Carrier within 2 Business Days. A TCCA is received and receipt acknowledged within 1 Business Day. The TCCA is confirmed by the Donor Carrier within 2 Business Days. A TCNA Withdrawal is received and rejected with Response Code 055 (TCCA Cutover Notification exists for the batch reference number for same Gaining Carrier). Transfer is successfully completed on Cutover Date.
Test Outcome	Transfer successfully completed and the PLNR points the Telephone Number to the Gaining Carrier.

Day	Carrier	Transaction Type	Description	Code Value
0	G	TCNA		n/a
1	D	TCNA Receipt		n/a
2	D	TCNA Confirmation		"000"
2	D	PLNR update		"D"
3	D	PLNR update		"E"
8	G	TCCA		n/a
9	D	TCCA Receipt		n/a
10	D	TCCA Confirmation		"000"
14	G	TCNA Withdrawal		n/a
15	D	TCNA Withdrawal Rejection	TCCA Cutover Notification exist for the batch reference number for same Gaining Carrier.	"055"
21	D	Cutover complete	No physical transaction	n/a
22	D	PLNR update		"B"
23	D	PLNR update	PLNR entry points to Gaining Carrier.	"space"

Scenario No	CTP07
Pre- Requisite Scenario	CDL01
Test Scenario Type	Successful Transfer after two Retargets Accepted and TCCA Withdrawal Rejection.
Scenario Description	A successful Transfer by the Donor Carrier from the Losing Carrier to the Gaining Carrier after two Retargets (TCCA) have been accepted and TCCA Withdrawal is rejected with Response Code 032 (Insufficient notification timeframe). Withdrawal would be received on last day of Transfer window.
Detailed Test Description	A TCNA is sent from the Gaining Carrier and receipt acknowledged by the Donor Carrier within 1 Business Day. The TCNA is confirmed by the Donor Carrier within 2 Business Days. A TCCA is received and receipt acknowledged within 1 Business Day. The TCCA is confirmed by the Donor Carrier within 2 Business Days. A TCCA Retarget is received and receipt acknowledged within 1 Business Day. The TCCA Retarget is confirmed by the Donor Carrier within 2 Business Days. A second TCCA Retarget is received and receipt acknowledged within 1 Business Day. The second TCCA Retarget is confirmed by the Donor Carrier within 2 Business Days. A TCCA Withdrawal is received and rejected with Response Code 032 (Insufficient notification timeframe). The Transfer is successfully completed on Cutover Date.
Test Outcome	Transfer successfully completed and the PLNR points the Telephone Number to the Gaining Carrier.

Day	Carrier	Transaction Type	Description	Code Value
0	G	TCNA		n/a
1	D	TCNA Receipt		n/a
2	D	TCNA Confirmation		"000"
2	D	PLNR update		"D"
3	D	PLNR update		"E"
8	G	TCCA		n/a
9	D	TCCA Receipt		n/a
10	D	TCCA Confirmation		"000"
11	G	TCCA Retarget		n/a
14	D	TCCA Retarget Receipt		n/a
15	D	TCCA Retarget		"000"

Day	Carrier	Transaction Type	Description	Code Value
		Confirmation		
21	G	TCCA Retarget		n/a
22	D	TCCA Retarget Receipt		n/a
23	D	TCCA Retarget Confirmation		"000"
57	G	TCCA Withdrawal		n/a
58	D	TCCA Withdrawal Rejection	Insufficient notification timeframe.	"032"
58	D	Cutover complete	No physical transaction	n/a
59	D	PLNR update		"B"
60	D	PLNR update	PLNR entry points to Gaining Carrier.	"space"

Scenario No	CTP08
Pre- Requisite Scenario	CDL01
Test Scenario Type	Successful TCNA Withdrawal.
Scenario Description	A Transfer request is terminated by a successful TCNA Withdrawal transaction.
Detailed Test Description	A TCNA is sent from the Gaining Carrier and receipt acknowledged by the Donor Carrier within 1 Business Day. The TCNA is confirmed by the Donor Carrier within 2 Business Days A valid TCNA Withdrawal Notification is received therefore a TCNA Withdrawal Confirmation is sent within 1 Business Day. Transfer is cancelled.
Test Outcome	Transfer successfully Withdrawn and Telephone Number remains on PLNR.

Day	Carrier	Transaction Type	Description	Code Value
0	G	TCNA		n/a
1	D	TCNA Receipt		n/a
2	D	TCNA Confirmation		"000"
2	D	PLNR update		"D"
3	D	PLNR update		"E"
8	G	TCNA Withdrawal Notification		n/a

9	D	TCNA Withdrawal Confirmation		"000"
10	D	PLNR update		"F"
11	D	PLNR update	PLNR entry restored	"space"

Scenario No	CTP09
Pre- Requisite Scenario	CDL01
Test Scenario Type	Successful TCCA Withdrawal.
Scenario Description	A Transfer request is terminated by a successful TCCA Withdrawal transaction.
Detailed Test Description	A TCNA is sent from the Gaining Carrier and receipt acknowledged by the Donor Carrier within 1 Business Day. The TCNA is confirmed by the Donor Carrier within 2 Business Days. . A TCCA is received and receipt acknowledged within 1 Business Day. The TCCA is confirmed by the Donor Carrier within 2 Business Days. A valid TCCA Withdrawal Notification is received therefore a TCCA Withdrawal Confirmation is sent within 1 Business Day. Transfer is cancelled.
Test Outcome	Transfer successfully Withdrawn and Telephone Number remains on PLNR.

Day	Carrier	Transaction Type	Description	Code Value
0	G	TCNA		n/a
1	D	TCNA Receipt		n/a
2	D	TCNA Confirmation		"000"
2	D	PLNR update		"D"
3	D	PLNR update		"E"
8	G	TCCA		n/a
9	D	TCCA Receipt		n/a
10	D	TCCA Confirmation		"000"
11	G	TCCA Withdrawal Notification		n/a
14	D	TCCA Withdrawal Confirmation		"000"
15	D	PLNR update		"F"
16	D	PLNR update	PLNR entry restored	"space"

Scenario No	CTP10
Pre- Requisite Scenario	CDL01
Test Scenario Type	Donor Carrier Expiry
Scenario Description	A Transfer request is terminated by the generation of a TCNA Expiry Notification.
Detailed Test Description	A TCNA is sent from the Gaining Carrier and receipt acknowledged by the Donor Carrier within 1 Business Day. The TCNA is confirmed by the Donor Carrier within 2 Business Days. No TCCA Cutover Notification is received within 120 calendar days. The Donor Carrier cancels the TCNA and sends a TCNA Expiry Notification the Business Day following the expiry date.
Test Outcome	Transfer is expired and Telephone Number remains on PLNR.

Day	Carrier	Transaction Type	Description	Code Value
0	G	TCNA		n/a
1	D	TCNA Receipt		n/a
2	D	TCNA Confirmation		"000"
2	D	PLNR update		"D"
3	D	PLNR update		"E"
120	D	TCNA Expiry Notification		n/a
121	D	PLNR update		"F"
122	D	PLNR update	PLNR entry restored	"space"

Scenario No	CTP11
Pre- Requisite Scenario	CDL01
Test Scenario Type	Donor Carrier Expiry after Withdrawal rejection.
Scenario Description	A Transfer request is terminated by the generation of a TCNA Expiry Notification after TCNA Withdrawal has been rejected with Response Code 032 (Insufficient notification timeframe).
Detailed Test Description	A TCNA is sent from the Gaining Carrier and receipt acknowledged by the Donor Carrier within 1 Business Day. The TCNA is confirmed by the Donor Carrier within 2 Business Days. A TCNA Withdrawal is received and rejected with Response Code 032 (Insufficient notification timeframe) within 1 Business Day. The Donor Carrier cancels the TCNA and sends a TCNA Expiry Notification the Business Day following the expiry date.
Test Outcome	Transfer is expired and Telephone Number remains on PLNR.

Day	Carrier	Transaction Type	Description	Code Value
0	G	TCNA		n/a
1	D	TCNA Receipt		n/a
2	D	TCNA Confirmation		"000"
2	D	PLNR update		"D"
3	D	PLNR update		"E"
119	G	TCNA Withdrawal Notification		n/a
120	D	TCNA Expiry Notification		n/a
120	D	TCNA Withdrawal Rejection	(Insufficient notification timeframe)	"032"
121	D	PLNR update		"F"
122	D	PLNR update	PLNR entry restored	'space'

Scenario No	CTP12
Pre- Requisite Scenario	CDL01
Test Scenario Type	TCCA Withdrawal after two Retargets.
Scenario Description	A Transfer request is successfully terminated after two CCA Retargets have been accepted.
Detailed Test Description	A TCNA is sent from the Gaining Carrier and receipt acknowledged by the Donor Carrier within 1 Business Day. The TCNA is confirmed by the Donor Carrier within 2 Business Days. A TCCA is received and receipt acknowledged within 1 Business Day. The TCCA is confirmed by the Donor Carrier within 2 Business Days. A TCCA Retarget is received and receipt acknowledged within 1 Business Day. The TCCA Retarget is confirmed by the Donor Carrier within 2 Business Days. A second TCCA Retarget is received and receipt acknowledged within 1 Business Day. The second TCCA Retarget is confirmed by the Donor Carrier within 2 Business Days. A TCCA Withdrawal is received and confirmed within 1 Business Day by the Donor Carrier. The Transfer is successfully Withdrawn.
Test Outcome	Transfer is Withdrawn and Telephone Number remains on PLNR.

Day	Carrier	Transaction Type	Description	Code Value
0	G	TCNA		n/a
1	D	TCNA Receipt		n/a
2	D	TCNA Confirmation		"000"
2	D	PLNR update		"D"
3	D	PLNR update		"E"
8	G	TCCA		n/a
9	D	TCCA Receipt		n/a
10	D	TCCA Confirmation		"000"
11	G	TCCA Retarget		n/a
14	D	TCCA Retarget Receipt		n/a
15	D	TCCA Retarget Confirmation		"000"
21	G	TCCA Retarget		n/a
22	D	TCCA Retarget		n/a

Day	Carrier	Transaction Type	Description	Code Value
		Receipt		
23	D	TCCA Retarget Confirmation		"000"
30	G	TCCA Withdrawal		n/a
32	D	TCCA Withdrawal Confirmation	Would be sent on Day 31 except it is a Public Holiday.	"000"
32	D	PLNR update	Would be updated on Day 31 except it is a Public Holiday.	"F"
33	D	PLNR update	PLNR entry restored	"space"

Scenario No	CTP13
Pre- Requisite Scenario	CDL01
Test Scenario Type	Rejected Transfer
Scenario Description	A Transfer request is rejected for Response Code 069 (All Telephone Numbers in the batch are not owned by the Donor).
Detailed Test Description	A TCNA is sent from the Gaining Carrier and receipt acknowledged by the Donor Carrier within 1 Business Day. The TCNA is rejected by the Donor Carrier with Response Code 069 (All Telephone Numbers in the batch are not owned by the Donor).
Test Outcome	Transfer is rejected and Telephone Number remains on PLNR.

Day	Carrier	Transaction Type	Description	Code Value
0	G	TCNA		n/a
1	D	TCNA Receipt		n/a
2	D	TCNA Rejection	(All Telephone Numbers in the batch are not owned by the Donor).	"069"

Scenario No	CTP14
Pre- Requisite Scenario	CDL01
Test Scenario Type	Expiry after Emergency Return.
Scenario Description	A Transfer request is terminated by the generation of an Expiry Notification after an Emergency Return.
Detailed Test Description	A TCNA is sent from the Gaining Carrier and receipt acknowledged by the Donor Carrier within 1 Business Day. The TCNA is confirmed by the Donor Carrier within 2 Business Days. A TCCA is received and receipt acknowledged within 1 Business Day. The TCCA is confirmed by the Donor Carrier within 2 Business Days. Transfer is successfully completed on Cutover Date. An Emergency Return is called and the Port is allowed to expire.
Test Outcome	Transfer Expires and the Telephone Number remains on the Donor Carriers PLNR.

Day	Carrier	Transaction Type	Description	Code Value
0	G	TCNA		n/a
1	D	TCNA Receipt		n/a
2	D	TCNA Confirmation		"000"
2	D	PLNR update		"D"
3	D	PLNR update		"E"
8	G	TCCA		n/a
9	D	TCCA Receipt		n/a
10	D	TCCA Confirmation		"000"
15	D	Cutover complete	No physical transaction	n/a
16	G	Emergency Return	The Emergency Return is actioned within the Emergency Return period. This is a manual action.	n/a
120	D	TCNA Expiry Notification		n/a
121	D	PLNR update		"F"
122	D	PLNR update	PLNR entry restored	"space"

Scenario No	CTP15
Pre- Requisite Scenario	CDL01
Test Scenario Type	TCCA after Emergency Return
Scenario Description	A successful Transfer by the Donor Carrier from the Losing Carrier after Emergency Return has occurred and new TCCA accepted.
Detailed Test Description	A TCNA is sent from the Gaining Carrier and receipt acknowledged by the Donor Carrier within 1 Business Day. The TCNA is confirmed by the Donor Carrier within 2 Business Days. A TCCA is received and receipt acknowledged within 1 Business Day. The TCCA is confirmed by the Donor Carrier within 2 Business Days. Transfer is successfully completed on Cutover Date. An Emergency Return is called. A TCCA is received and receipt is sent within 1 Business Day. The TCCA confirmed by the Donor Carrier within 2 Business Days. The Transfer is successfully completed on Cutover Date.
Test Outcome	Transfer successfully completed and the PLNR points the Telephone Number to the Gaining Carrier.

Day	Carrier	Transaction Type	Description	Code Value
0	G	TCNA		n/a
1	D	TCNA Receipt		n/a
2	D	TCNA Confirmation		"000"
2	D	PLNR update		"D"
3	D	PLNR update		"E"
8	G	TCCA		n/a
9	D	TCCA Receipt		n/a
10	D	TCCA Confirmation		"000"
15	D	Cutover complete	No physical transaction.	n/a
16	G	Emergency Return	The Emergency Return is actioned within the Emergency Return period. This is a manual action.	n/a
21	G	TCCA		n/a
22	D	TCCA Receipt		n/a
23	D	TCCA Confirmation		"000"
30	D	Cutover complete	No physical transaction	n/a

Day	Carrier	Transaction Type	Description	Code Value
32	D	PLNR update	Would be updated on Day 31 except it is a Public Holiday.	"B"
33	D	PLNR update	PLNR entry points to Gaining Carrier.	"space"

Scenario No	CTP16
Pre- Requisite Scenario	CDL01
Test Scenario Type	TCCA Retarget after Emergency Return.
Scenario Description	A successful Transfer by the Donor Carrier from the Losing Carrier after Emergency Return has occurred and new TCCA Retarget accepted.
Detailed Test Description	A TCNA is sent from the Gaining Carrier and receipt acknowledged by the Donor Carrier within 1 Business Day. The TCNA is confirmed by the Donor Carrier within 2 Business Days. A TCCA is received and receipt acknowledged within 1 Business Day. The TCCA is confirmed by the Donor Carrier within 2 Business Days. Transfer is successfully completed on Cutover Date. An Emergency Return is called. A TCCA Retarget is received and receipt is sent within 1 Business Day. The TCCA Retarget is confirmed by the Donor Carrier within 2 Business Days. The Transfer is successfully completed on Cutover Date.
Test Outcome	Transfer successfully completed and the PLNR points the Telephone Number to the Gaining Carrier.

Day	Carrier	Transaction Type	Description	Code Value
0	G	TCNA		n/a
1	D	TCNA Receipt		n/a
2	D	TCNA Confirmation		"000"
2	D	PLNR update		"D"
3	D	PLNR update		"E"
8	G	TCCA		n/a
9	D	TCCA Receipt		n/a
10	D	TCCA Confirmation		"000"
15	D	Cutover complete	No physical transaction	n/a

Day	Carrier	Transaction Type	Description	Code Value
16	G	Emergency Return	The Emergency Return is actioned within the Emergency Return period. This is a manual action.	n/a
21	G	TCCA Retarget		n/a
22	D	TCCA Retarget Receipt		n/a
23	D	TCCA Retarget Confirmation		"000"
30	D	Cutover complete	No physical transaction	n/a
32	D	PLNR update	Would be updated on Day 31 except it is a Public Holiday.	"B"
33	D	PLNR update	PLNR entry points to Gaining Carrier.	"space"

Scenario No	CTP17
Pre- Requisite Scenario	CDL01
Test Scenario Type	TCCA Withdraw after Emergency Return.
Scenario Description	A Transfer request is successfully terminated after an Emergency Return has occurred.
Detailed Test Description	A TCNA is sent from the Gaining Carrier and receipt acknowledged by the Donor Carrier within 1 Business Day. The TCNA is confirmed by the Donor Carrier within 2 Business Days. A TCCA is received and receipt acknowledged within 1 Business Day. The TCCA is confirmed by the Donor Carrier within 2 Business Days. Transfer is successfully completed on Cutover Date. An Emergency Return is called. A TCCA Withdrawal is received and confirmation is sent within 1 Business Day.
Test Outcome	Transfer is successfully cancelled and the Telephone Number remains on the Donor Carriers PLNR.

Day	Carrier	Transaction Type	Description	Code Value
0	G	TCNA		n/a
1	D	TCNA Receipt		n/a
2	D	TCNA Confirmation		"000"
2	D	PLNR update		"D"
3	D	PLNR update		"E"
8	G	TCCA		n/a
9	D	TCCA Receipt		n/a
10	D	TCCA Confirmation		"000"
15	D	Cutover complete	No physical transaction	n/a
16	G	Emergency Return	The Emergency Return is actioned within the Emergency Return period. This is a manual action.	n/a
21	G	TCCA Withdrawal Notification		n/a
22	D	TCCA Withdrawal Confirmation		"000"
23	D	PLNR update		"F"
26	D	PLNR update	Would be updated on	"space"

Day	Carrier	Transaction Type	Description	Code Value
			Day 24 except it and Day 25 are both Public Holidays. PLNR entry restored	

3.4 Giveback

Scenario No	CGB01
Pre- Requisite Scenario	CDL01
Test Scenario Type	Giveback Successful
Scenario Description	A Giveback is successfully processed.
Detailed Test Description	A Giveback Notification is sent by the Losing Carrier to the Donor Carrier and confirmed by the Donor Carrier within 1 Business Day.
Test Outcome	The Telephone Number is returned to the Donor Carrier is no longer on the PLNR.

Day	Carrier	Transaction Type	Description	Code Value
0	L	Giveback Notification		n/a
1	D	Giveback Confirmation		"000"
2	D	PLNR update		"C"
3	D	PLNR update	PLNR entry removed	n/a

Scenario No	CGB02
Pre- Requisite Scenario	CDL01
Test Scenario Type	Giveback Rejected
Scenario Description	A Giveback is rejected for Response Code 038 (Giveback invalid).
Detailed Test	A Giveback Notification A Giveback Notification is sent by

Description	the Losing Carrier to the Donor Carrier and rejected by the Donor Carrier within 1 Business Day with Response Code 038 (Giveback invalid).
Test Outcome	Giveback is rejected and Telephone Number remains on PLNR.

Day	Carrier	Transaction Type	Description	Code Value
0	L	Giveback Notification		n/a
1	D	Giveback Rejection		"038"

4 TEST RUN SCHEDULE MATRIX

4.1 Run Chart for Category C Process Intercarrier Interface Testing

Actual Date	System Date	Day of Week	Bus Day	Day	PNO	Hot Batch	PLNR
	1 December 2003	Mon	0	0	CDL01		CDG01
					CDL02		CDG02
					CDL03		CDG03
					CDL04		CDG04
					CDL05		CDG05
					CDL06		CDG06
					CDL07		CDG07
					CDL08		CDG08
					CDL09		CDG09
					CDL10		CDG10
					CDL11		CDG11
					CDL12		CDG12
					CDL13		CDG13
					CDL14		CDG14
					CDL15		CDG15
					CDL16		CDG16
					CDL17		CDG17
					CDL18		CDG18
					CDL19		CDG19
					CDL20		CDG20
					CDL21		CDG21
					CDL22		CDG22
					CDL23		CDG23
					CDL24		CDG24
					CDL25		CDG25
					CDL26		CDG26
					CDG01		
					CDG02		
					CDG03		
					CDG04		
					CDG05		
					CDG06		

Actual Date	System Date	Day of Week	Bus Day	Day	PNO	Hot Batch	PLNR
					CDG07		
					CDG08		
					CDG09		
					CDG10		
					CDG11		
					CDG12		
					CDG13		
					CDG14		
					CDG15		
					CDG16		
					CDG17		
					CDG18		
					CDG19		
					CDG20		
					CDG21		
					CDG22		
					CDG23		
					CDG24		
					CDG25		
					CDG26		
					CTP01		
					CTP02		
					CTP03		
					CTP04		
					CTP05		
					CTP06		
					CTP07		
					CTP08		
					CTP09		
					CTP10		
					CTP11		
					CTP12		
					CTP13		
					CTP14		
					CTP15		

Actual Date	System Date	Day of Week	Bus Day	Day	PNO	Hot Batch	PLNR
					CTP16 CTP17		
	2 December 2003	Tue	1	1	CDL01 CDL02 CDL03 CDL04 CDL05 CDL06 CDL07 CDL08 CDL09 CDL10 CDL11 CDL12 CDL13 CDL14 CDL15 CDL16 CDL17 CDL18 CDL19 CDL20 CDL21 CDL22 CDL23 CDL24 CDL25 CDL26 CDG01 CDG02 CDG03 CDG04 CDG05 CDG06 CDG07		CDG01 CDG02 CDG03 CDG04 CDG05 CDG06 CDG07 CDG08 CDG09 CDG10 CDG11 CDG12 CDG13 CDG14 CDG15 CDG16 CDG17 CDG18 CDG19 CDG20 CDG21 CDG22 CDG23 CDG24 CDG25 CDG26

Actual Date	System Date	Day of Week	Bus Day	Day	PNO	Hot Batch	PLNR
					CDG08		
					CDG09		
					CDG10		
					CDG11		
					CDG12		
					CDG13		
					CDG14		
					CDG15		
					CDG16		
					CDG17		
					CDG18		
					CDG19		
					CDG20		
					CDG21		
					CDG22		
					CDG23		
					CDG24		
					CDG25		
					CDG26		
					CTP01		
					CTP02		
					CTP03		
					CTP04		
					CTP05		
					CTP06		
					CTP07		
					CTP08		
					CTP09		
					CTP10		
					CTP11		
					CTP12		
					CTP13		
					CTP14		
					CTP15		
					CTP16		

Actual Date	System Date	Day of Week	Bus Day	Day	PNO	Hot Batch	PLNR
					CTP17		
	3 December 2003	Wed	2	2	CTP01		CTP01
					CTP02		CTP02
					CTP03		CTP03
					CTP04		CTP04
					CTP05		CTP05
					CTP06		CTP06
					CTP07		CTP07
					CTP08		CTP08
					CTP09		CTP09
					CTP10		CTP10
					CTP11		CTP11
					CTP12		CTP12
					CTP13		CTP14
					CTP14		CTP15
					CTP15		CTP16
					CTP16		CTP17
					CTP17		
	4 December 2003	Thu	3	3	CDL01		CTP01
					CDL02		CTP02
					CDL03		CTP03
					CDL04		CTP04
					CDL05		CTP05
					CDL06		CTP06
					CDL07		CTP07
					CDL08		CTP08
					CDL09		CTP09
					CDL10		CTP10
					CDL11		CTP11
					CDL12		CTP12
					CDL13		CTP14
					CDL14		CTP15
					CDL15		CTP16
					CDL16		CTP17
					CDL17		

Actual Date	System Date	Day of Week	Bus Day	Day	PNO	Hot Batch	PLNR
					CDL18		
					CDL19		
					CDL20		
					CDL21		
					CDL23		
					CDL24		
					CDL25		
					CDL26		
					CDG01		
					CDG02		
					CDG03		
					CDG04		
					CDG05		
					CDG06		
					CDG07		
					CDG08		
					CDG09		
					CDG10		
					CDG11		
					CDG12		
					CDG13		
					CDG14		
					CDG15		
					CDG16		
					CDG17		
					CDG18		
					CDG19		
					CDG20		
					CDG21		
					CDG22		
					CDG23		
					CDG24		
					CDG25		
					CDG26		
	5 December	Fri	4	4			CDG21

Actual Date	System Date	Day of Week	Bus Day	Day	PNO	Hot Batch	PLNR
	2003						CDG22
	6 December 2003	Sat	4	5			CDG21 CDG22
	7 December 2003	Sun	4	6			
	8 December 2003	Mon	5	7			
	9 December 2003	Tue	6	8	CDL01 CDL02 CDL03 CDL04 CDL05 CDL06 CDL07 CDL08 CDL09 CDL10 CDL11 CDL13 CDL14 CDL16 CDL17 CDL18 CDL19 CDL20 CDL23 CDL24 CDL25 CDL26 CDG01 CDG02 CDG03 CDG04 CDG05 CDG06		

Actual Date	System Date	Day of Week	Bus Day	Day	PNO	Hot Batch	PLNR
					CDG07		
					CDG08		
					CDG09		
					CDG10		
					CDG11		
					CDG13		
					CDG14		
					CDG16		
					CDG17		
					CDG18		
					CDG19		
					CDG20		
					CDG23		
					CDG24		
					CDG25		
					CDG26		
					CTP01		
					CTP02		
					CTP03		
					CTP04		
					CTP05		
					CTP06		
					CTP07		
					CTP08		
					CTP09		
					CTP14		
					CTP15		
					CTP16		
					CTP17		
	10 December 2003	Wed	7	9	CDL01		
					CDL02		
					CDL03		
					CDL04		
					CDL05		
					CDL06		

Actual Date	System Date	Day of Week	Bus Day	Day	PNO	Hot Batch	PLNR
					CDL07		
					CDL08		
					CDL09		
					CDL10		
					CDL11		
					CDL13		
					CDL14		
					CDL16		
					CDL17		
					CDL18		
					CDL19		
					CDL20		
					CDL23		
					CDL24		
					CDL25		
					CDL26		
					CDG01		
					CDG02		
					CDG03		
					CDG04		
					CDG05		
					CDG06		
					CDG07		
					CDG08		
					CDG09		
					CDG10		
					CDG11		
					CDG13		
					CDG14		
					CDG16		
					CDG17		
					CDG18		
					CDG19		
					CDG20		
					CDG23		

Actual Date	System Date	Day of Week	Bus Day	Day	PNO	Hot Batch	PLNR
					CDG24 CDG25 CDG26 CTP01 CTP02 CTP03 CTP04 CTP05 CTP06 CTP07 CTP08 CTP09 CTP14 CTP15 CTP16 CTP17		
	11 December 2003	Thu	8	10	CTP01 CTP02 CTP03 CTP04 CTP05 CTP06 CTP07 CTP09 CTP15 CTP16 CTP17		CDG09
	12 December 2003	Fri	9	11	CDL01 CDL02 CDL07 CDL11 CDL16 CDL17 CDL23 CDL24		CDG09

Actual Date	System Date	Day of Week	Bus Day	Day	PNO	Hot Batch	PLNR
					CDL25 CDL26 CDG01 CDG02 CDG07 CDG11 CDG16 CDG17 CDG23 CDG24 CDG25 CDG26 CTP02 CTP03 CTP04 CTP05 CTP07 CTP09 CTP14		
	13 December 2003	Sat	9	12			
	14 December 2003	Sun	9	13			
	15 December 2003	Mon	10	14	CDL02 CDL03 CDL04 CDL05 CDL06 CDL07 CDL08 CDL10 CDL11 CDL14 CDL16 CDL17		

Actual Date	System Date	Day of Week	Bus Day	Day	PNO	Hot Batch	PLNR
					CDL18 CDL19 CDL20 CDG02 CDG03 CDG04 CDG05 CDG06 CDG07 CDG08 CDG10 CDG11 CDG14 CDG16 CDG17 CDG18 CDG19 CDG20 CTP02 CTP03 CTP04 CTP05 CTP06 CTP07 CTP09		
	16 December 2003	Tue	11	15	CDL02 CDL03 CDL04 CDL05 CDL06 CDL07 CDL08 CDL10 CDL11 CDL14		CTP09

Actual Date	System Date	Day of Week	Bus Day	Day	PNO	Hot Batch	PLNR
					CDL16 CDL17 CDL18 CDL19 CDL20 CDG02 CDG03 CDG04 CDG05 CDG06 CDG07 CDG08 CDG10 CDG11 CDG14 CDG16 CDG17 CDG18 CDG19 CDG20 CTP02 CTP03 CTP04 CTP05 CTP06 CTP07		
	17 December 2003	Wed	12	16			CDL01 CDG01 CDG11 CTP01 CTP09
	18 December 2003	Thu	13	17	CDL02 CDL03 CDL04 CDL08		CDL01 CDG01 CDG11 CTP01

Actual Date	System Date	Day of Week	Bus Day	Day	PNO	Hot Batch	PLNR
					CDL16 CDL17 CDL18 CDL19 CDL20 CDG02 CDG03 CDG04 CDG08 CDG16 CDG17 CDG18 CDG19 CDG20		
	19 December 2003	Fri	14	18			
	20 December 2003	Sat	14	19			CDL07 CDG07
	21 December 2003	Sun	14	20			
	22 December 2003	Mon	15	21	CDL04 CDL05 CDL06 CDL08 CDL10 CDL17 CDL18 CDL19 CDL20 CDL24 CDL25 CDL26 CDG04 CDG05		CDL07 CDG07

Actual Date	System Date	Day of Week	Bus Day	Day	PNO	Hot Batch	PLNR
					CDG06 CDG08 CDG10 CDG17 CDG18 CDG19 CDG20 CDG24 CDG25 CDG26 CTP04 CTP05 CTP07 CTP15 CTP16 CTP17		
	23 December 2003	Tue	16	22	CDL04 CDL05 CDL06 CDL08 CDL10 CDL17 CDL18 CDL19 CDL20 CDL24 CDL25 CDL26 CDG04 CDG05 CDG06 CDG08 CDG10 CDG17		CDL02 CDL03 CDL16 CDG02 CDG03 CDG16 CTP02 CTP03CT P06

Actual Date	System Date	Day of Week	Bus Day	Day	PNO	Hot Batch	PLNR
					CDG18 CDG19 CDG20 CDG24 CDG25 CDG26 CTP04 CTP05 CTP07 CTP15 CTP16 CTP17		
	24 December 2003	Wed	17	23	CDL04 CDL05 CDL08 CDL17 CDL18 CDL19 CDL20 CDL24 CDL25 CDG04 CDG05 CDG08 CDG17 CDG18 CDG19 CDG20 CDG24 CDG25 CTP04 CTP03 CTP07 CTP15		CDL02 CDL03 CDL16 CDG02 CDG03 CDG10 CDG16 CDG26 CTP02 CTP03 CTP06 CTP17

Actual Date	System Date	Day of Week	Bus Day	Day	PNO	Hot Batch	PLNR
					CTP16		
	25 December 2003	Thu P/H	17	24			
	26 December 2003	Fri P/H	17	25			
	27 December 2003	Sat	17	26			CDG10 CDG26 CTP17
	28 December 2003	Sun	17	27			
	29 December 2003	Mon	18	28			
	30 December 2003	Tue	19	29			
	31 December 2003	Wed	20	30	CDL06 CDL08 CDL19 CDL20 CDG06 CDG08 CDG19 CDG20 CTP05		
	1 January 2004	Thu	20	31			
	2 January 2004	Fri	21	32	CDL06 CDL08 CDL19 CDL20 CDG06 CDG08 CDG19 CDG20 CTP05		CDL04 CDL05 CDL17 CDL18 CDL24 CDL25 CDG04 CDG05 CDG17 CDG18

Actual Date	System Date	Day of Week	Bus Day	Day	PNO	Hot Batch	PLNR
							CDG24 CDG25 CTP04 CTP15 CTP16
	3 January 2004	Sat	21	33			CDL04 CDL05 CDL08 CDL17 CDL18 CDL24 CDL25 CDG04 CDG05 CDG08 CDG17 CDG18 CDG20 CTP04 CTP16 CDG24 CDG25 CTP15 CTP16
	4 January 2004	Sun	21	34			
	5 January 2004	Mon	22	35	CDL06 CDL19 CDG06 CDG19 CTP05		CDL08 CDG20
	6 January 2004	Tue	23	36			
	7 January 2004	Wed	24	37			
	8 January 2004	Thu	25	38			

Actual Date	System Date	Day of Week	Bus Day	Day	PNO	Hot Batch	PLNR
	9 January 2004	Fri	26	39			CDL06 CDL19 CDG06 CDG19 CTP05
	10 January 2004	Sat	26	40			CDL06 CDL19 CDG06 CDG19 CTP05
	11 January 2004	Sun	26	41			
	12 January 2004	Mon	27	42			
	13 January 2004	Tue	28	43			
	14 January 2004	Wed	29	44			
	15 January 2004	Thu	30	45			
	16 January 2004	Fri	31	46			
	17 January 2004	Sat	31	47			
	18 January 2004	Sun	31	48			
	19 January 2004	Mon	32	49			
	20 January 2004	Tue	33	50			
	21 January 2004	Wed	34	51			
	22 January 2004	Thu	35	52			
	23 January 2004	Fri	36	53			
	24 January 2004	Sat	36	54			
	25 January	Sun	36	55			

Actual Date	System Date	Day of Week	Bus Day	Day	PNO	Hot Batch	PLNR
	2004						
	26 January 2004	Mon	36	56			
	27 January 2004	Tue	37	57	CTP07		
	28 January 2004	Wed	38	58	CTP07		
	29 January 2004	Thu	39	59	CDL15 CDG15		CTP07
	30 January 2004	Fri	40	60	CDL12 CDL15 CDL23 CDG12 CDG15 CDG23		CTP07
	31 January 2004	Sat	40	61			CDG12 CDG15 CDG23
	1 February 2004	Sun	40	62			
	2 February 2004	Mon	41	63			CDG12 CDG15 CDG23
	3 February 2004	Tue	42	64			
	4 February 2004	Wed	43	65			
	5 February 2004	Thu	44	66			
	6 February 2004	Fri	45	67			
	7 February 2004	Sat	45	68			
	8 February 2004	Sun	45	69			
	9 February 2004	Mon	46	70	CDL13 CDG13		
	10 February	Tue	47	71			CDG13

Actual Date	System Date	Day of Week	Bus Day	Day	PNO	Hot Batch	PLNR
	2004						
	11 February 2004	Wed	48	72			CDG13
	12 February 2004	Thu	49	73			
	13 February 2004	Fri	50	74	CDL14 CDG14		
	14 February 2004	Sat	50	75			CDG14
	15 February 2004	Sun	50	76			
	16 February 2004	Mon	51	77			CDG14
	17 February 2004	Tue	52	78			
	18 February 2004	Wed	53	79			
	19 February 2004	Thu	54	80			
	20 February 2004	Fri	55	81			
	21 February 2004	Sat	55	82			
	22 February 2004	Sun	55	83			
	23 February 2004	Mon	56	84			
	24 February 2004	Tue	57	85			
	25 February 2004	Wed	58	86			
	26 February 2004	Thu	59	87			
	27 February 2004	Fri	60	88			
	28 February 2004	Sat	60	89			
	29 February 2004	Sun	60	90			
	1 March 2004	Mon	61	91			

Actual Date	System Date	Day of Week	Bus Day	Day	PNO	Hot Batch	PLNR
	2 March 2004	Tue	62	92			
	3 March 2004	Wed	63	93			
	4 March 2004	Thu	64	94			
	5 March 2004	Fri	65	95			
	6 March 2004	Sat	65	96			
	7 March 2004	Sun	65	97			
	8 March 2004	Mon	66	98			
	9 March 2004	Tue	67	99			
	10 March 2004	Wed	68	100			
	11 March 2004	Thu	69	101			
	12 March 2004	Fri	70	102			
	13 March 2004	Sat	70	103			
	14 March 2004	Sun	70	104			
	15 March 2004	Mon	71	105			
	16 March 2004	Tue	72	106			
	17 March 2004	Wed	73	107			
	18 March 2004	Thu	74	108			
	19 March 2004	Fri	75	109			
	20 March 2004	Sat	75	110			
	21 March 2004	Sun	75	111			
	22 March 2004	Mon	76	112			
	23 March 2004	Tue	77	113			
	24 March 2004	Wed	78	114			
	25 March 2004	Thu	79	115			
	26 March 2004	Fri	80	116			
	27 March 2004	Sat	80	117			
	28 March 2004	Sun	80	118			
	29 March 2004	Mon	81	119	CTP12		
	30 March 2004	Tue	82	120	CTP10 CTP11 CTP12 CTP14		
	31 March 2004	Wed	83	121	CTP11		CTP10 CTP11

Actual Date	System Date	Day of Week	Bus Day	Day	PNO	Hot Batch	PLNR
							CTP12 CTP14
	01 April 2004	Thu	84	122			CTP10 CTP11 CTP12 CTP14
	02 April 2004	Fri	85	123			
	04 April 2004	Sat	85	124			
	05 April 2004	Sun	85	125			
	06 April 2004	Mon	86	126			
	07 April 2004	Tue	87	127			
	08 April 2004	Wed	88	128			
	09 April 2004	Thu	89	129			
	10 April 2004	Fri	90	130			

5 RESPONSE CODES

Not all response codes will be tested as part of Application Layer testing, however the following points should be noted:

- All response codes require internal testing.
- Some response codes are for internal testing only as they require manual intervention to automated processes.
- If a Participant cannot generate a transaction to elicit the appropriate response code, a variation to the execution schedule can be agreed on a case by case basis.

The following table is provided to assist Participants to identify those response codes they wish to test.

Response Codes for Cat. C Testing							
Transaction	Response Code	Reject Reason	Probability (0 - 10)	Impact (0 - 10)	Ranking (1 - 100)	Comment	Test Y/N
	001	Service Number Not Found.					
	002	Service Number is on Diversion.					
	003	Inactive Service					
	004	Disconnected Service					
	005	Complex Service – eg ISDN, Line Hunt etc.					
	006	ULLS Call Diversion does not exist on requested Telephone Number.					
	007	ULLS Number/Telephone Number mismatch.					
	008	Outstanding Porting Request					

Response Codes for Cat. C Testing							
Transaction	Response Code	Reject Reason	Probability (0 - 10)	Impact (0 - 10)	Ranking (1 - 100)	Comment	Test Y/N
	009	Porting Already Completed					
	010	Telephone Number Ported to Another ASD.					
	011	ASD Owned Telephone Number.					
	012	Not Used					
	013	Not Used					
	014	Not Used					
	015	Incompatible Exchange Technology.					
	016	Not Used					
	017	Telephone Number / Account Mismatch.				No longer required	
	018	All mandatory fields are not populated.					
	019	Not Used					
	020	Transaction Level Rejections.					
	021	Not Used					
	022	Not Used					
	023	Not Used					
	024	Not Used					

Response Codes for Cat. C Testing							
Transaction	Response Code	Reject Reason	Probability (0 - 10)	Impact (0 - 10)	Ranking (1 - 100)	Comment	Test Y/N
	025	Not Used					
	026	Not Used					
	027	Not Used					
	028	Not Used					
	029	Not Used					
	030	Not Used					
	031	Not Used					
	032	Insufficient notification time frame.					
	033	Not Used					
	034	Cutover outside Standard Hours of Operation.					
	035	No Porting Request is currently outstanding.					
	036	Invalid Cutover Timeslot.					
	037	Retarget Limit exceeded.					
	038	Giveback Invalid					
	039	Out of Area Telephone Number.					
	040	Duplicate Telephone Number in Batch.					

Response Codes for Cat. C Testing							
Transaction	Response Code	Reject Reason	Probability (0 - 10)	Impact (0 - 10)	Ranking (1 - 100)	Comment	Test Y/N
	041	Multiple Sites					
	042	Not Used					
	043	Not Used					
	044	Not Used					
	045	Not Used					
	046	Not Used					
	047	Not Used					
	048	Not Used					
	049	Not Used					
	050	Not Used					
	051	Telephone Number currently being Ported to another Carrier.					
	052	Service is currently connected to the ASD's network.					
	053	Cutover Date is within the Lead Time.					
	054	Cutover Date is outside Expiry Date .					
	055	Invalid Status - CNA Retarget or Withdrawal requested					

Response Codes for Cat. C Testing							
Transaction	Response Code	Reject Reason	Probability (0 - 10)	Impact (0 - 10)	Ranking (1 - 100)	Comment	Test Y/N
		after CCA was Confirmed.					
	056	Invalid Withdrawal request					
	057	Invalid Retarget request					
	058	Not Used					
	059	Not Used					
	060	Incomplete Number Block or missing Telephone Numbers in Batch.					
	061	Batch Reference Number Missing					
	062	Giveback Date Invalid					
	063	Incorrect Category					
	064	Secondary Reject					
	065	Telephone Numbers are not contiguous for a product.					
	066	Not Used					
	067	Invalid CA date					
	068	Not Used					
	069	Donor Reject					
	070	Not Used					
	071	Not Used					

Response Codes for Cat. C Testing							
Transaction	Response Code	Reject Reason	Probability (0 -10)	Impact (0 -10)	Ranking (1 - 100)	Comment	Test Y/N
	072	Not Used					
	073	Excluded product					
	074	Not Used					
	075	Not Used					
	076	Not Used					
	077	Batch Number NOT unique					

6 REFERENCES

Publication	Title
Industry Codes	
C540:2013	Local Number Portability Incorporating Variation No.2/2016
C513:2015	Customer and Network Fault Management
C515:2015	Pre-selection - Single Basket/Multi Service Deliverer
ACIF C566:2005	Rights of Use of Numbers
C569:2015	Unconditioned Local Loop Service - Ordering, Provisioning and Customer Transfer
C628:2015	Telecommunications Consumer Protections
Industry Guidelines	
ACIF G520:2005	Local Number Portability - Network Plan
G602.1:2016	Local Number Portability IT Specifications and Operations Manual (General)
G602.4:2016	Local Number Portability IT Specifications and Operations Manual Part 4 - Category C Processing
G603:2013	Local Number Portability IT Test Strategy
G613.1:2016	Local Number Portability IT Test Plan Part 1
Legislation	
<i>Privacy Act 1988 (Cth)</i>	
<i>Telecommunications Act 1997 (Cth)</i>	
<i>Telecommunications (Consumer Protection and Services Standards) Act 1999 (Cth)</i>	
<i>Telecommunications Numbering Plan 2015 (Cth)</i>	
<i>Competition and Consumer Act 2010 (Cth)</i>	

PARTICIPANTS

The Working Committee that revised this Guideline consisted of the following organisations and their representatives:

Organisation	Membership	Representative
Foxtel	Voting	Melanie Rainey
NBN Co	Voting	Mark Duke
Optus	Voting	Xanthe Corbett-Jones
Paradigm.One	Voting	Dev Gupta
Telstra	Voting	Craig McAinsh
Telstra	Participating	David Fabbian
VHA	Chair	Alexander R. Osborne
ACMA	Participating	Gerry O'Reilly
ACMA	Participating	Paul White

This Working Committee was chaired by Alexander R. Osborne. Craig Purdon of Communications Alliance provided project management support.

Communications Alliance was formed in 2006 to provide a unified voice for the Australian communications industry and to lead it into the next generation of converging networks, technologies and services.

In pursuing its goals, Communications Alliance offers a forum for the industry to make coherent and constructive contributions to policy development and debate.

Communications Alliance seeks to facilitate open, effective and ethical competition between service providers while ensuring efficient, safe operation of networks, the provision of innovative services and the enhancement of consumer outcomes.

It is committed to the achievement of the policy objective of the Telecommunications Act 1997 - the greatest practicable use of industry self-regulation without imposing undue financial and administrative burdens on industry.



**Published by:
COMMUNICATIONS
ALLIANCE LTD**

**Level 12
75 Miller Street
North Sydney
NSW 2060 Australia**

**Correspondence
PO Box 444
Milsons Point
NSW 1565**

**T 61 2 9959 9111
F 61 2 9954 6136
E info@commsalliance.com.au
www.commsalliance.com.au
ABN 56 078 026 507**

Care should be taken to ensure the material used is from the current version of the Standard or Industry Code and that it is updated whenever the Standard or Code is amended or revised. The number and date of the Standard or Code should therefore be clearly identified. If in doubt please contact Communications Alliance